



**PSYCHEDELIC  
THERAPY**



*TO FATHOM HELL*





OR SOAR ANGELIC



YOU NEED A PINCH

OF PSYCHEDELIC

HUMPHREY OSMOND





PSYCHOTOMIMETIC

EIDETICS

HALLUCINOGEN

PHANTASTICANTS

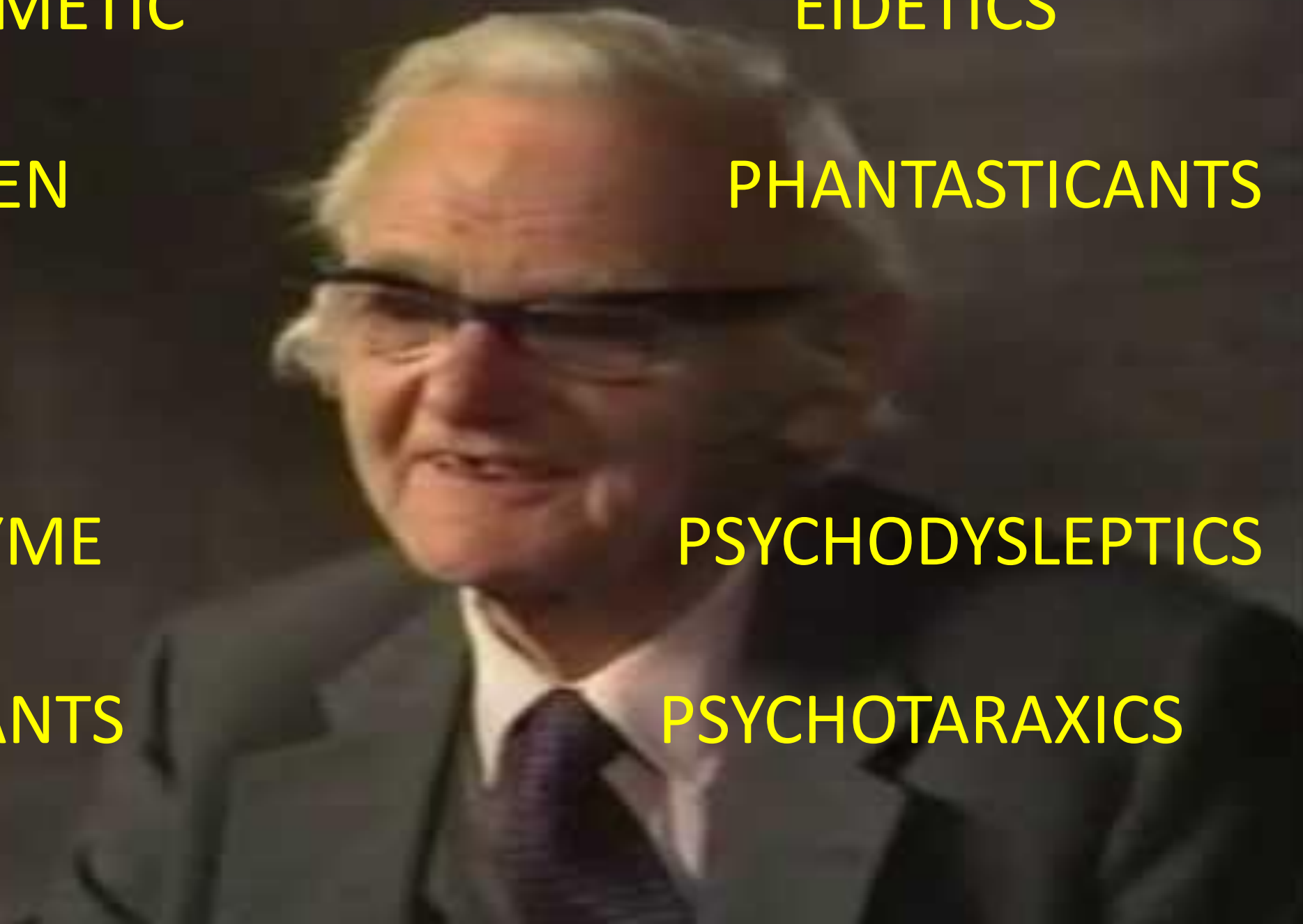
SCHIZOGEN

PHANEROTHYME

PSYCHODYSLEPTICS

PHANTASTICANTS

PSYCHOTARAXICS





**MIND MANIFESTING**

**SOUL REVEALING**





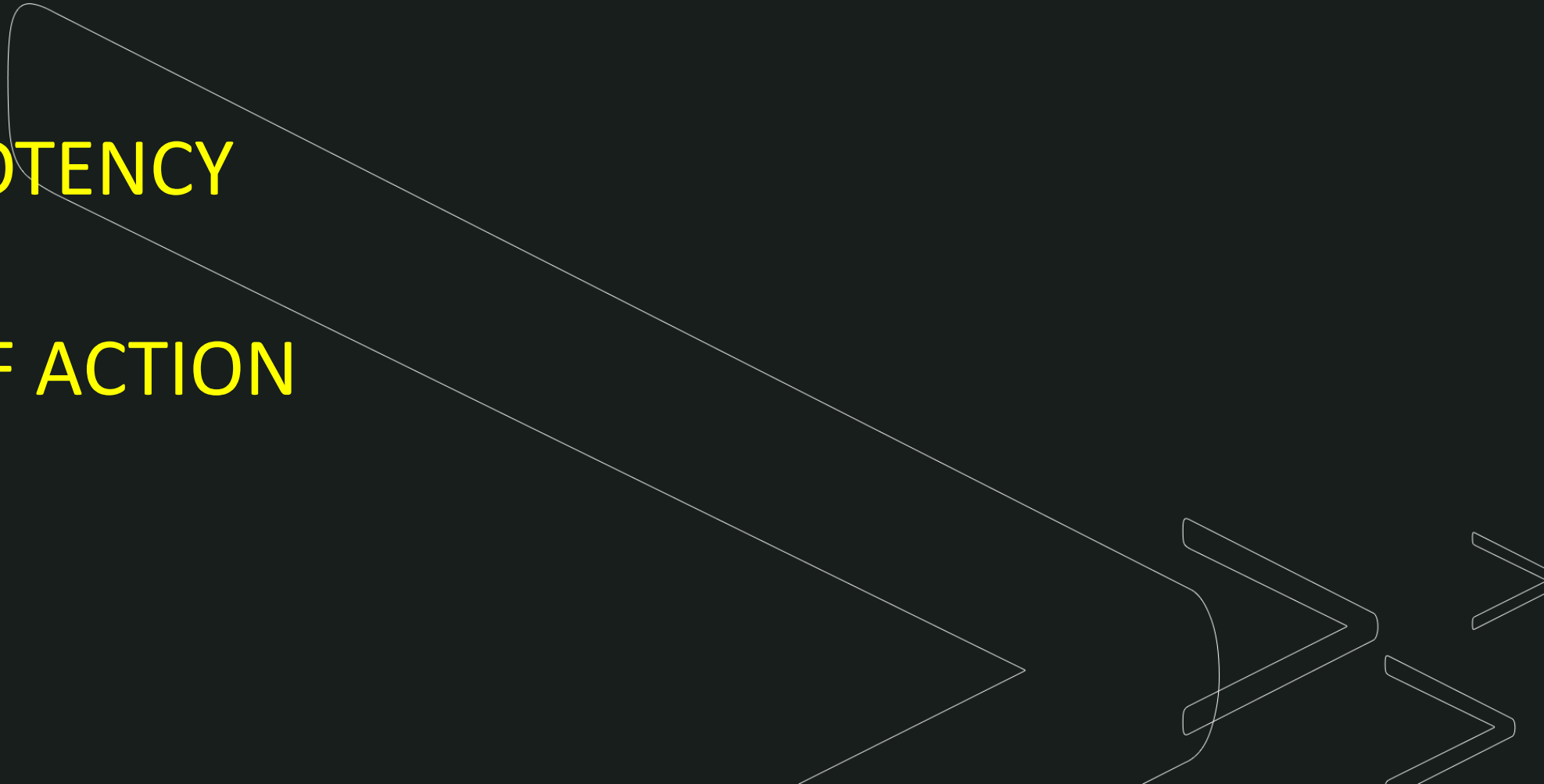
# *Psychedelics*

MANY VARIETIES AND MOLECULES

VARY IN POTENCY

LENGTH OF ACTION

SAFETY





# *Psychedelics*

TWO PRINCIPAL VARIETIES ARE DESCRIBED

BASED ON MODE OF ACTION





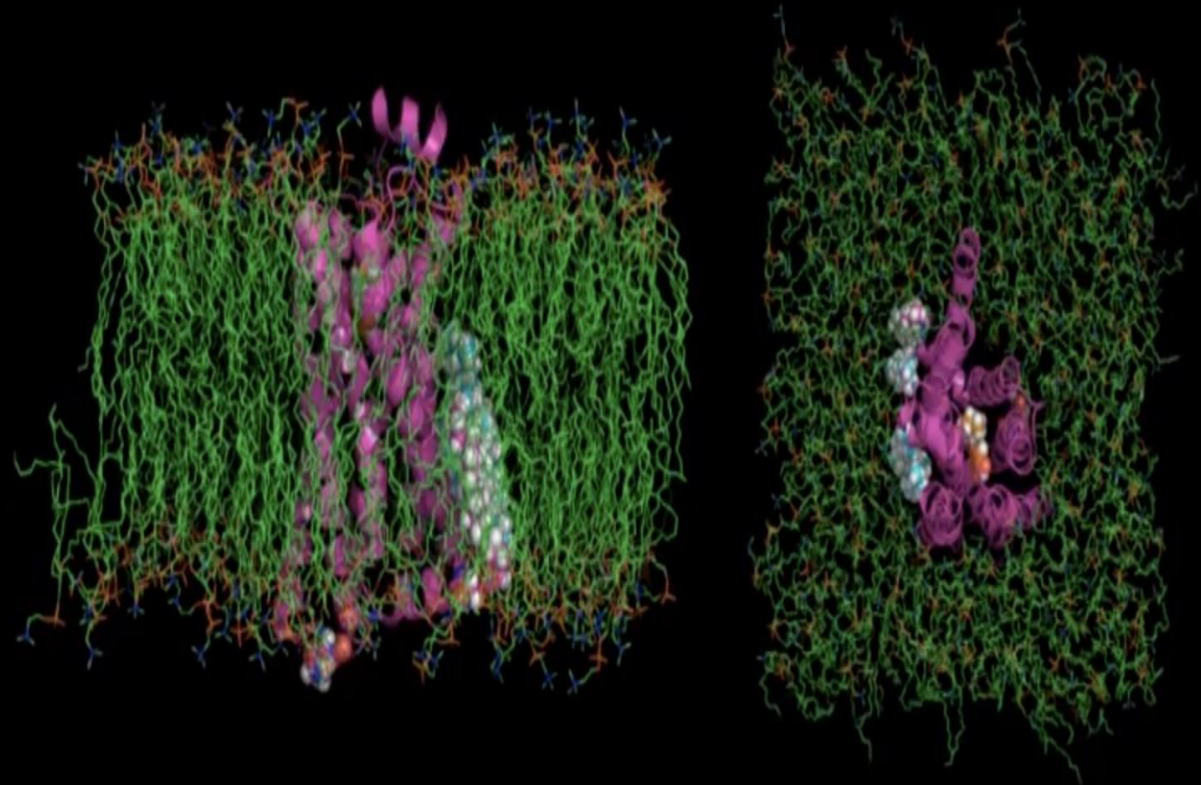
# *Psychedelic*

SEROTONERGIC:

LSD, PSILOCYBIN,  
Mescaline,  
DMT

THESE MOLECULES ARE  
AGONISTS AT THE  
5HT 2a RECEPTOR

## Illustration of Receptor Environment



Side View

Top View

The Receptor Spans the Membrane

Legend: Membrane Protein Cholesterol Ligand



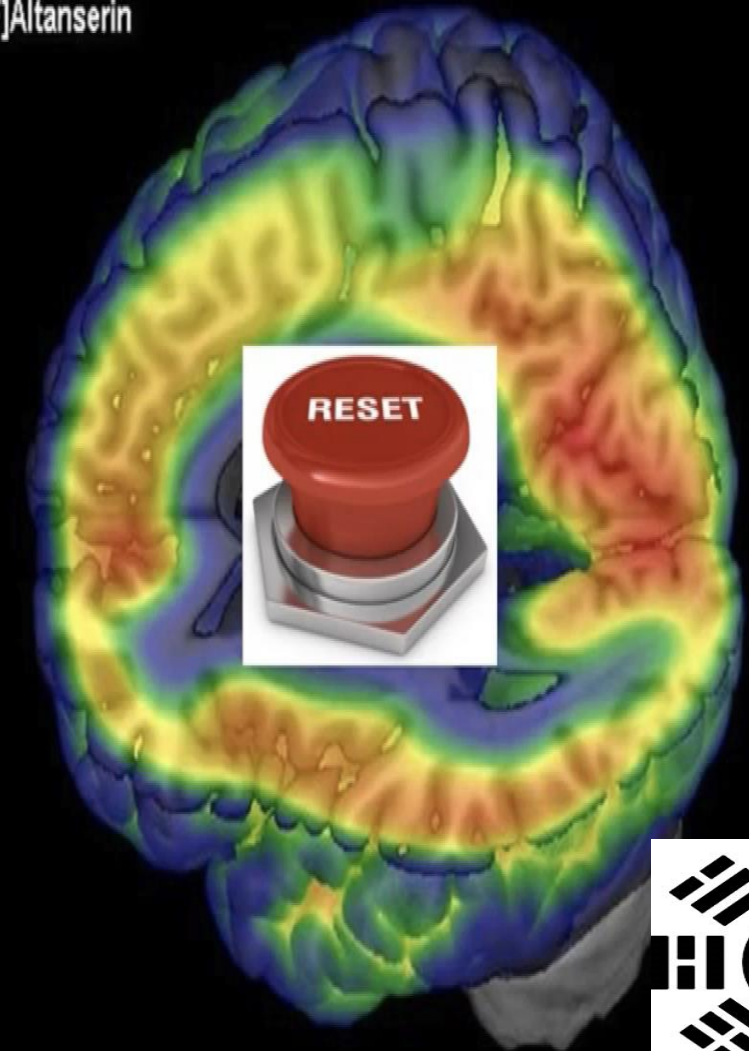
# *Psychedelics*

HT 2a RECEPTOR

? RESPONSIBLE FOR FLUID  
BRAIN STATES IN  
CHANGING  
CIRCUMSTANCES.

MAY BE THE KEY RECEPTOR  
IN HUMANS' ADAPTABILITY

[<sup>18</sup>F]Altanserin



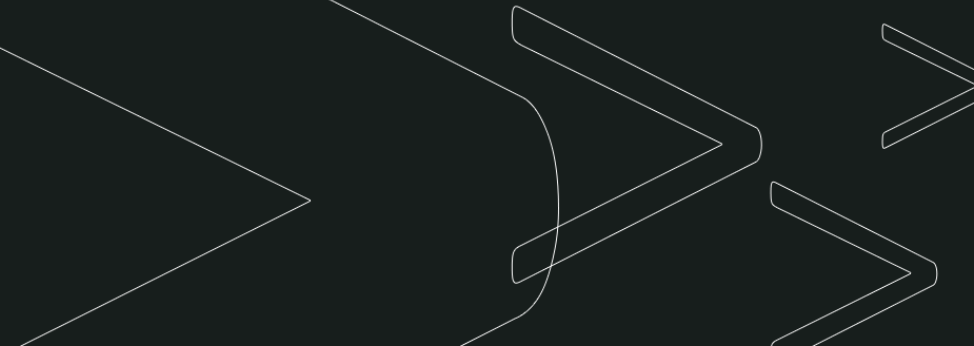


# *Psychedelics*

NON SEROTONERGIC

KETAMINE, IBOGAINE

A VARIETY OF TARGET RECEPTORS



# *Psychedelics*

THIS PRESENTATION WILL

FOCUS ON THE SEROTONERGIC

MOLECULE,

PSILOCYBIN AND ITS

ACTIVE METABOLITE, PSILOCIN

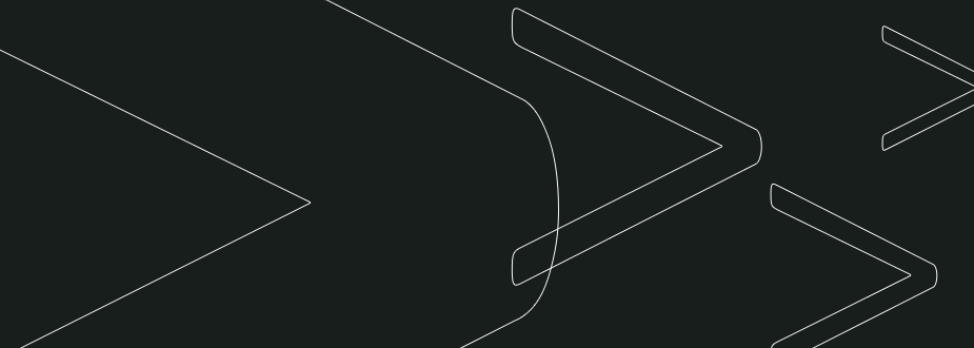




# *Psychedelics PHENOMENOLOGY*

NON-SPECIFIC AMPLIFIERS OF PSYCHIC  
CONTENTS

PROFOUND CHANGES IN PERCEPTION  
AND COGNITION

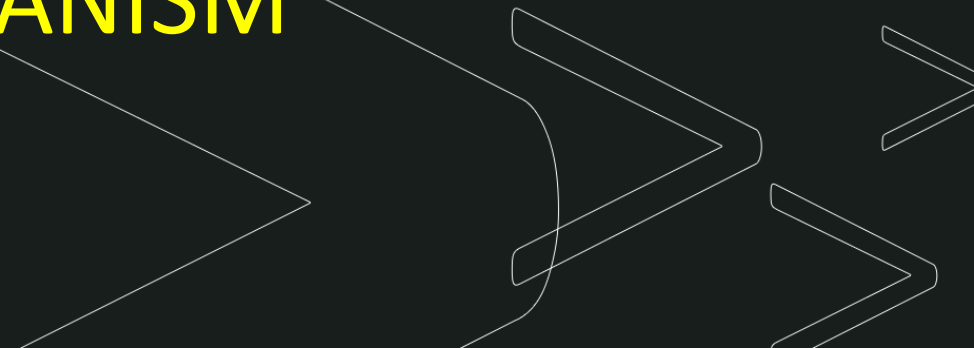


# *Psychedelics: MOA*

HAVE AFFINITY FOR AREAS OF HIGH TENSION

AFFECT EMOTIONAL RESPONSES, THOUGHT  
PROCESSES AND SENSORIUM

ACTIVATE INNER HEALING MECHANISM





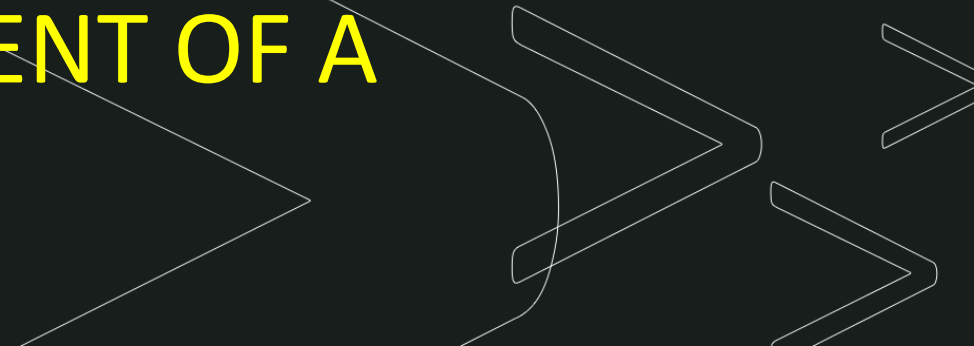
# *Psychedelics: MOA*

THERAPEUTIC EFFECTIVENESS TIGHTLY

LINKED TO SPECIFIC EXPERIENTIAL

PHENOMENA SUCH AS 'EGO

DISSOLUTION' AND THE ATTAINMENT OF A  
MYSTICAL EXPERIENCE



IT TAKES MANY YEARS TO UNDERSTAND THE WORLD AND  
YOUR PLACE IN IT.

WHEN YOU NO LONGER RECOGNIZE THE WORLD, AND  
YOU NO LONGER RECOGNIZE YOURSELF

YOU ALL OF A SUDDEN HAVE AN ENTIRELY NEW SET OF  
PROBLEMS.

*H. OSMOND*

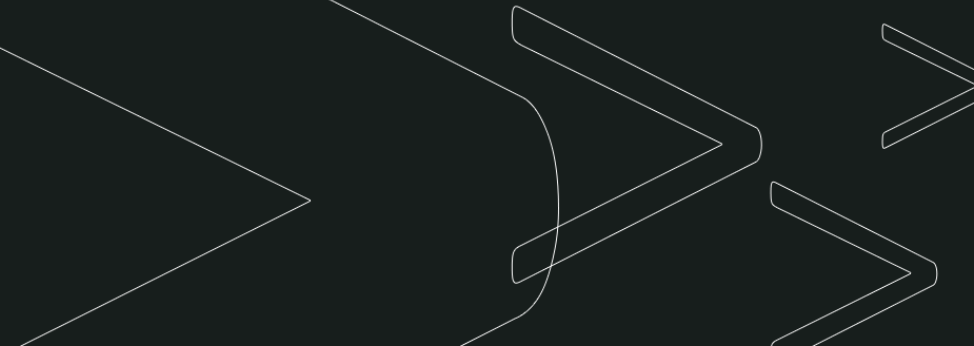


# ***PATIENT ASSESSMENT***

THESE PROFOUND CHANGES

MANDATE A DETAILED AND SPECIFIC

ASSESSMENT OF SUITABILITY OF BOTH PATIENT  
AND THERAPIST



A scenic landscape featuring a winding asphalt road that curves through lush green hills. The sun is low on the horizon, creating a warm, golden glow and long shadows across the terrain. The road leads the eye from the foreground into the distance, where more hills are visible under the soft light of the setting or rising sun.

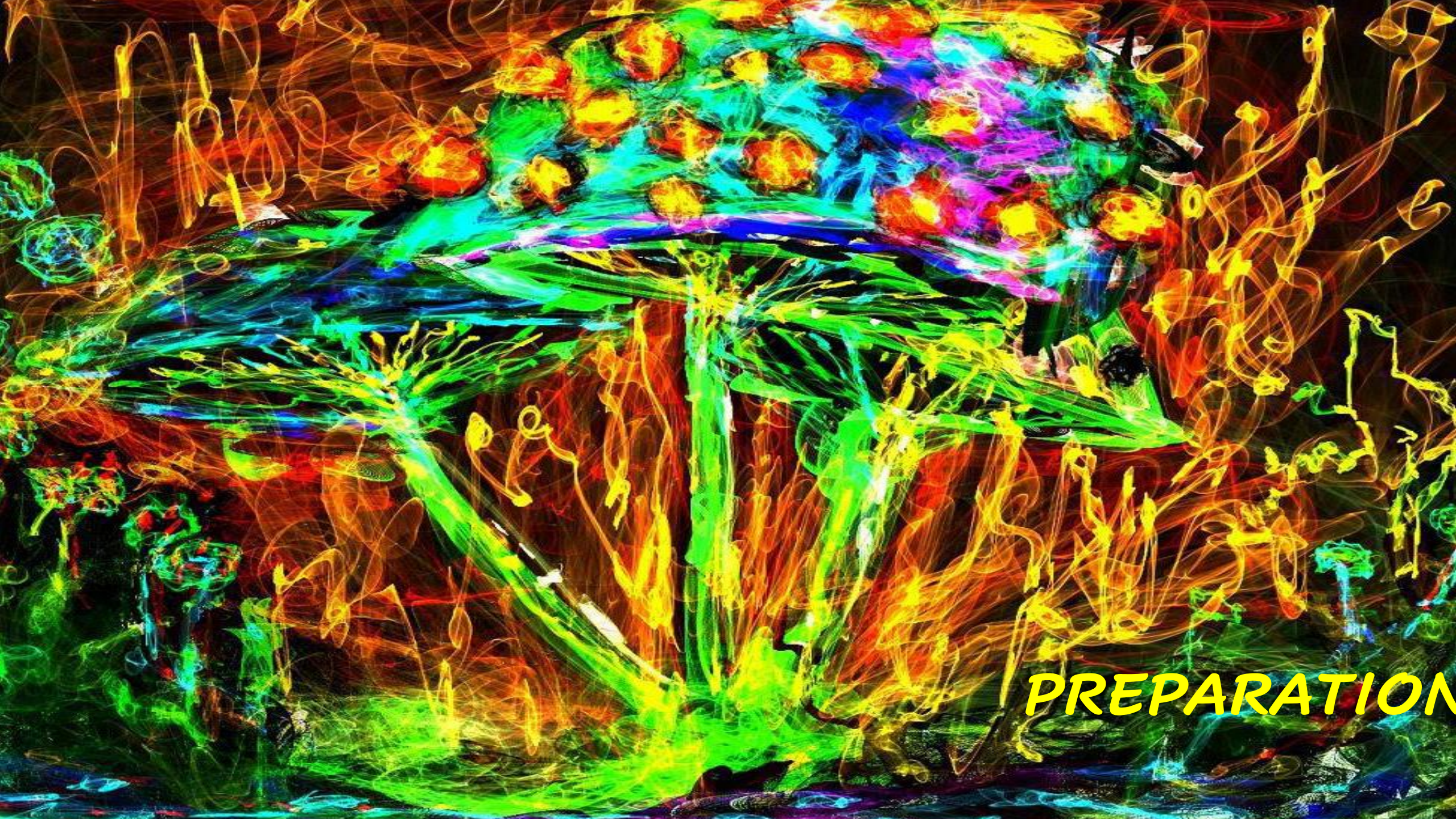
# *STAGES OF A PSYCHEDELIC JOURNEY*

PREPARATION

THE JOURNEY

INTEGRATION





***PREPARATION***

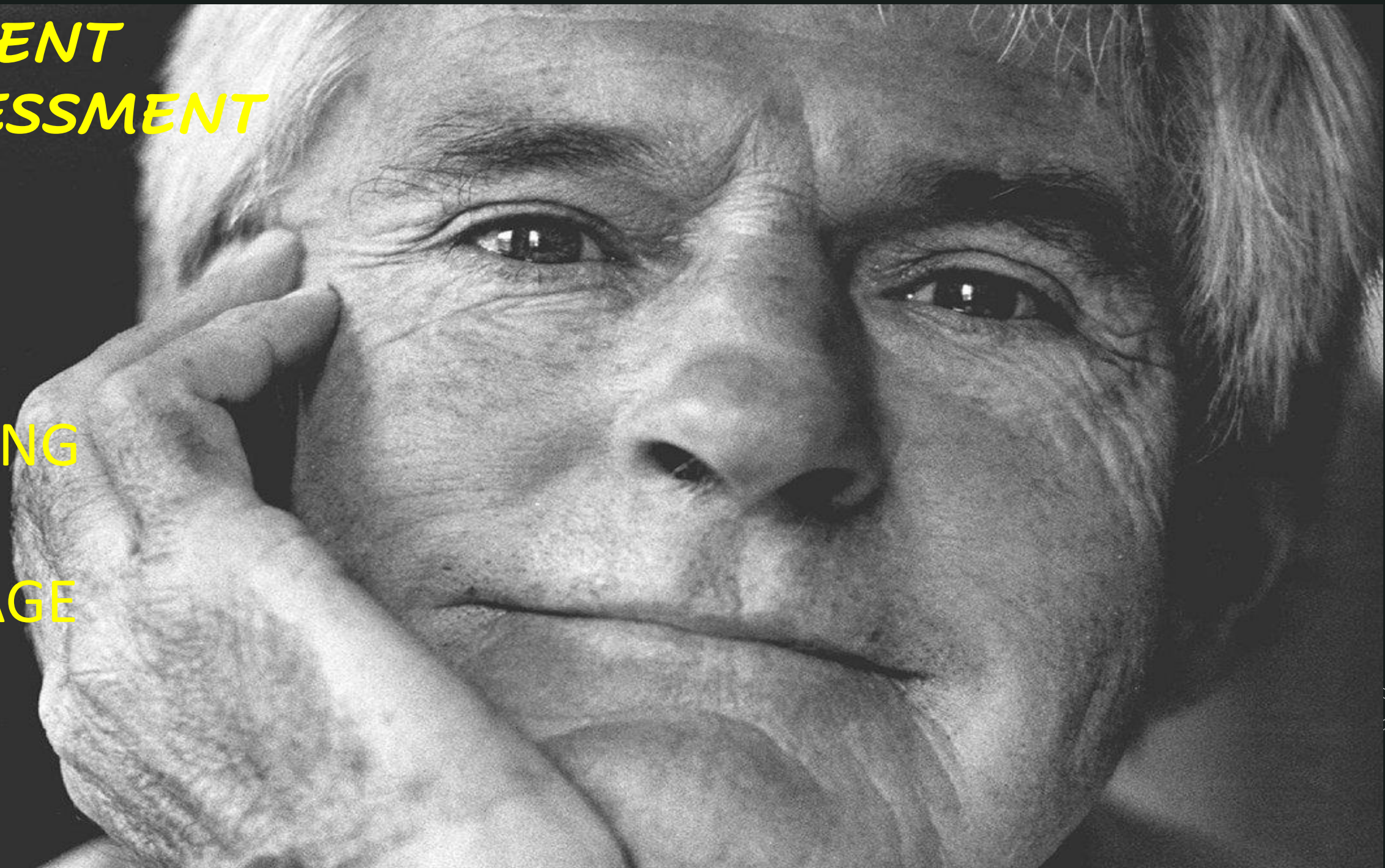


# ***PATIENT ASSESSMENT***

**SET**

**SETTING**

**DOSAGE**





# PATIENT ASSESSMENT

SELECTION  
SET

SETTING

DOSAGE

SKILLS



# *SELECTION*

•  
WHAT ARE THE CONDITIONS  
&  
WHICH PATIENTS  
ARE LIKELY TO BENEFIT  
FROM PSYCHEDELIC THERAPY?





# ***CONDITIONS THAT MAY BENEFIT EOLD***

**ADDICTIONS**

**(ETOH, TOBACCO, OPIOIDS)**

**TRD**

**PTSD**



*BREAKTHROUGH STATUS*

PSILOCYBIN AND MDMA

FOR

EOLD AND PTSD





# *CONDITIONS THAT MAY BENEFIT*



OCD

ANXIETY

HEADACHE

RELATIONSHIP ISSUES -  
MDMA



***OTHER DOMAINS***  
**SPIRITUAL / RELIGIOUS ISSUES**

**THE MEANING OF LIFE**

**THE NATURE OF CONSCIOUSNESS**

**THE OUTER LIMITS OF HUMAN EXPERIENCE**

**ARTISTIC AND MUSICAL COMPOSITION**



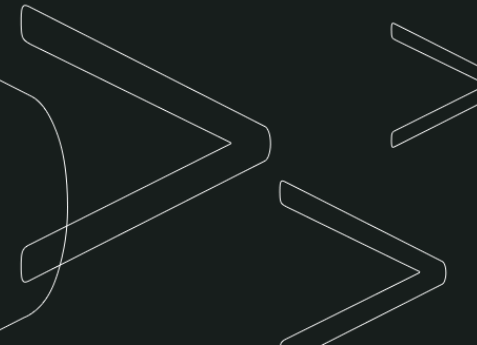




# PATIENT SELECTION AND ASSESSMENT

SAFE?

EFFICACIOUS?





***ASSESSMENT BEGINS WITH CONTRAINDICATION.***

**PHYSICALLY CAPABLE ?  
MEDICAL  
CONTRAINDICATIONS?**



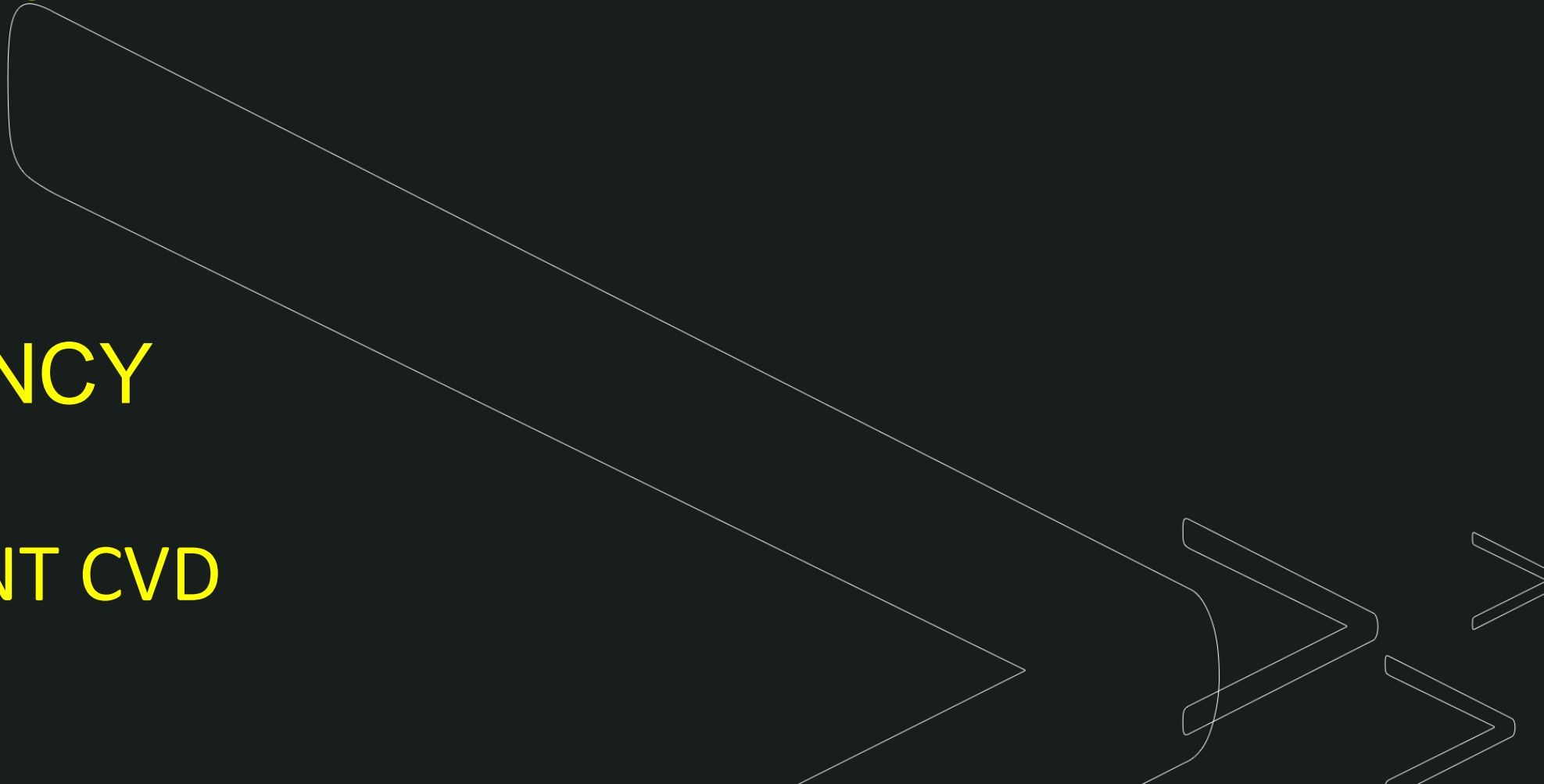
# *PHYSICAL CONTRAINDICATIONS*

BRAIN CANCER

EPILEPSY

PREGNANCY

SIGNIFICANT CVD





# ***PALLIATIVE ISSUES***

**DEGREE OF FRAILITY**

**LEVEL OF FUNCTIONING:**

**PPS PPI ESAS**



© © Ron Nickel/Design Pics/Corbis



# ***STANDARD PSYCHE CONTRAINDICATIONS***

PSYCHOSIS / FAMILY HISTORY OF PSYCHOSIS

BI-POLAR DISORDER

MEDICATION ISSUES: MOAI, TCA, SSRI, ANTIPSYCHOTICS

ANGER MANAGEMENT ISSUES

INTROSPECTION ABILITY / INTEREST



# *ASSESSMENT*

ESTABLISHING A TRUSTING  
BOND

IS THE MOST IMPORTANT  
INTERVENTION

IT BEGINS AT THE ASSESMENT STAGE



## *PERFORM STANDARD PSYCHE ASSESMENT*

- APPEARANCE
- SPEECH
- THOUGHT
- PERCEPTION
- COGNITION
- INSIGHT
- JUDGEMENT
- SUICIDE





## *PERFORM STANDARD PSYCHE ASSESMENT*

MOOD DISORDER  
ANXIETY DISORDER  
PSYCHOTIC DISORDER  
SUBSTANCE USE  
EATING DISORDER  
COGNITION DISORDER  
PAST MEDICAL/PSYCHE Hx  
PERSONALITY DISORDER



# *Specific elements of assessment relating to psychedelics*

ASSESS PATIENT'S KNOWLEDGE AND UNDERSTANDING  
OF PSYCHEDELICS

MANY WILL NEVER HAVE CONSIDERED PSYCHEDELICS

MAY HAVE INACCURATE VIEWS OF THEM





*PAST USE*

RECREATIONAL

THERAPEUTIC

RELIGIOUS



# *Specific Elements Relating to Psychedelics*

DE-SENSATIONALIZE

EDUCATE WHEN NECESSARY

PSYCHEDELICS ARE MEDICATIONS

LIKE A WAKING DREAM

AN INTERNAL MOVIE





PAST USE

CHALLENGES

RESOLVED?

HOW?



# SPIRITUAL ISSUES

LIFE AND ITS MEANING

BELIEF IN GOD  
HIGHER POWER

SPIRITUAL PRACTICE?







***PREPARATION***

***CATEGORIES OF EXPERIENCE***



# *PATIENT PREPARATION*

AN INTEGRAL PART OF THE

CREATING THE 'SET'

IS EXPLAINING THE WIDE

VARIETY OF EXPERIENCES

WHICH MAY OCCUR





# *PATIENT ASSESSMENT*

THUS,

YOU MUST UNDERSTAND

THEM YOURSELF.



# CATEGORIES OF EXPERIENCES AKA CARTOGRAPHY

SENSORY

BIOGRAPHY

PERINATAL

TRANSPERSONAL





SENSORY  
SENSATIONS MAY HAVE  
MEANINGFUL RELATIONSHIP  
TO FURTHER PROCESS, OR BE  
RANDOM AND MEANINGLESS

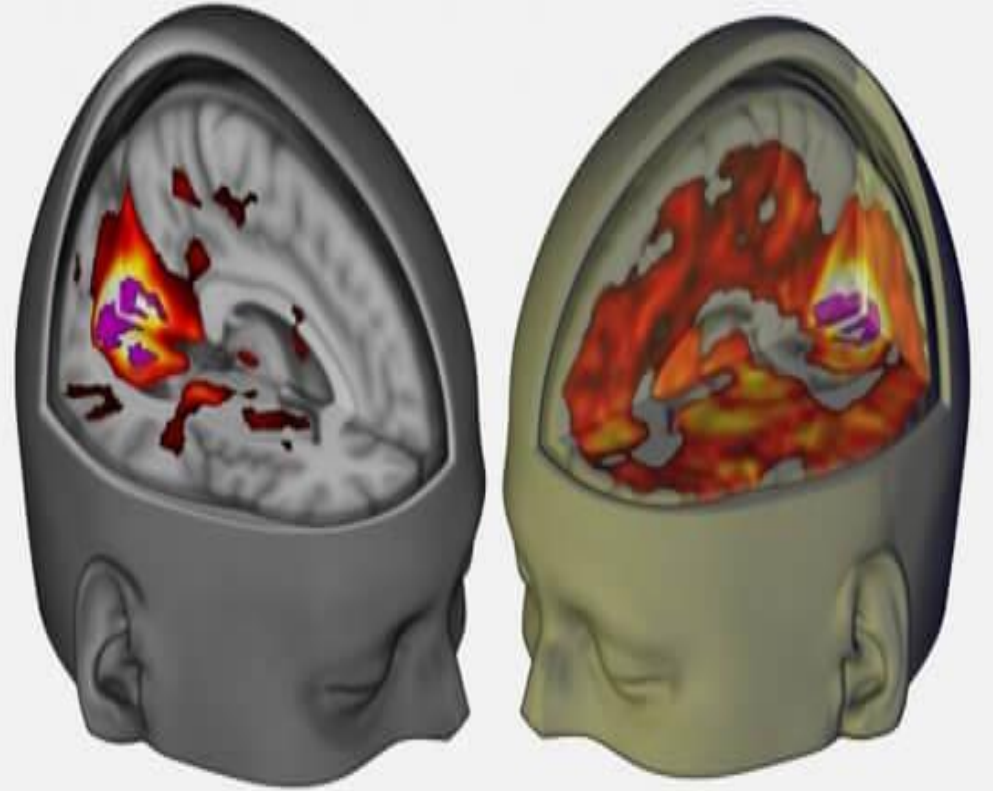


# ***SYNESTHESIA***

TASTING COLOUR

SEEING SOUND

HEARING LIGHT





# *BIOGRAPHY*

THE NEXT DOMAIN  
DESCRIBED IS THE  
BIOGRAPHICAL



ILLUSTRATION BY ANTHONY RUSSO

# *BIOGRAPHY*

PSYCHEDELICS ACTIVATE  
PSYCHODYNAMIC ISSUES  
RELATED TO EVENTS IN  
CHILDHOOD  
AND ADVERSE LIFE EVENTS



ILLUSTRATION BY ANTHONY RUSSO



# *BIOGRAPHY THEORETICAL UNDERPINNINGS*

PATIENT ADVISED THAT  
TRAUMATIC EXPERIENCES  
SIMPLY REMEMBERED

THEY MAY BE FULLY RE-  
EXPERIENCED

INCLUDING PRE- VERBAL  
TRAUMA

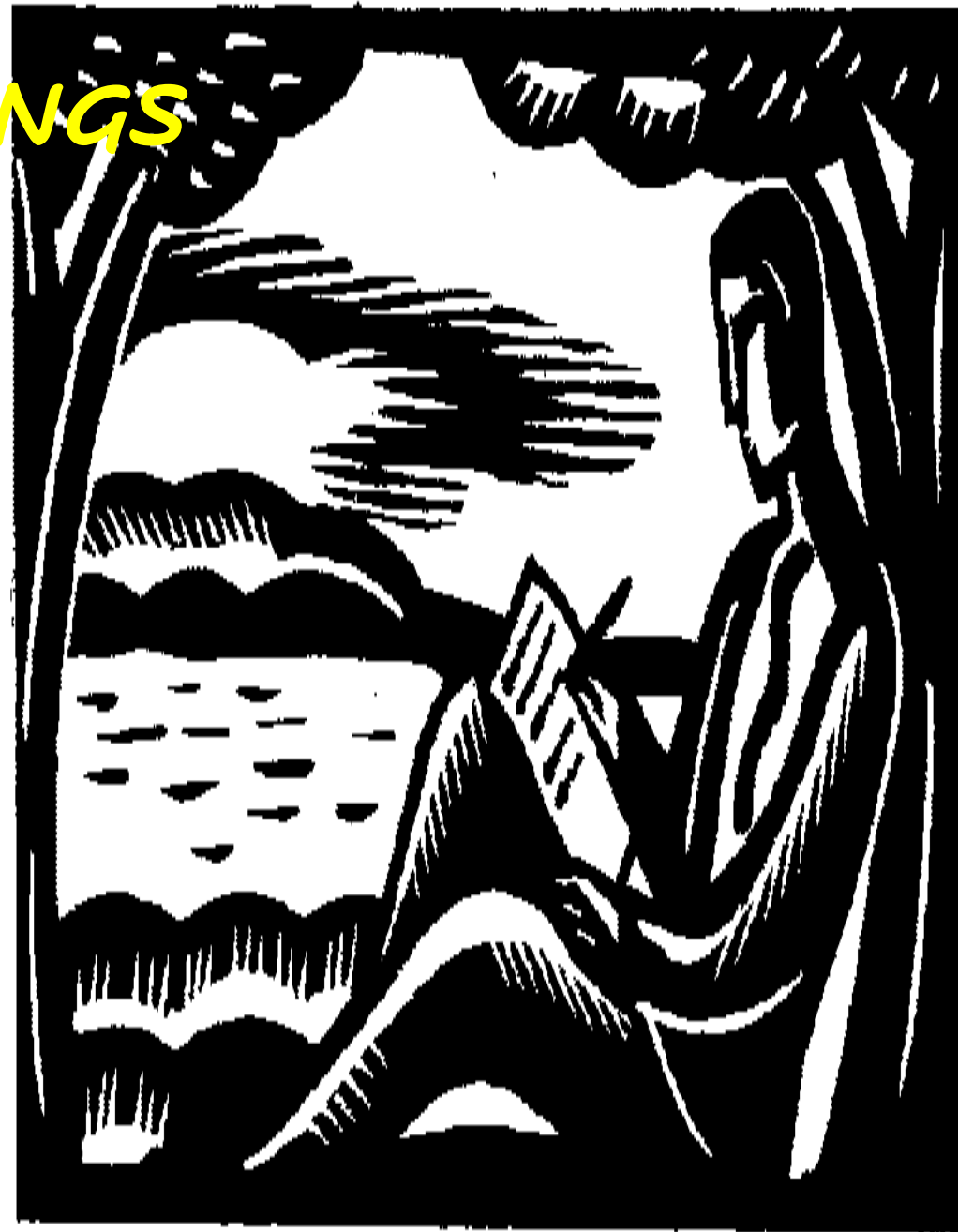


ILLUSTRATION BY ANTHONY RUSSO

# *BIOGRAPHY THEORETICAL UNDERPINNINGS*

PHYSICAL TRAUMAS

ACCIDENTS

SURGERIES

ASSAULTS



ILLUSTRATION BY ANTHONY RUSSO



# *BIOGRAPHY THEORETICAL UNDERPINNINGS*

PRE-VERBAL TRAUMA IS  
STORED SOMATICALLY

TRAUMA AND ABUSE ARE  
STORED SOMATICALLY  
AND CAN BE  
REALISTICALLY  
RE-EXPERIENCED



ILLUSTRATION BY ANTHONY RUSSO

# POSITIVE BIOGRAPHICAL EXPERIENCES





# *BIOGRAPHY THEORETICAL UNDERPINNINGS*

IF THE PATIENT IS  
TERMINALLY ILL,  
THE BIOGRAPHICAL  
DOMAIN MAY DOMNINATE  
THE SESSION



ILLUST





**PERINATAL  
DOMAIN**

**PERINATAL**



# *THEORETICAL UNDERPINNINGS*

PSYCHOLOGICAL  
DETERMINANTS  
DON'T BEGIN AT BIRTH

WOMB EXPERIENCES  
INFLUENTIAL

INCLUDING DELIVERY



*PERINATAL*

AN ENTIRELY REALISTIC

ENCOUNTER

WITH DEATH MAY OCCUR





# *PERINATAL*

THE ISSUE OF DEATH AND  
RE-BIRTH OF COURSE IS NOT  
LIMITED TO MEDICINE

CEREMONIES DEPICTING  
DEATH AND RE-BIRTH ARE  
AN ESSENTIAL COMPONENT  
OF THE RITES OF MOST  
ESOTERIC SOCIETIES.



# ***OB HISTORY***

MOTHER HEALTHY, ILL, TRAUMATIZED

ALCOHOL, DRUGS, CIGARETTES

MARRIAGE HAPPY / UNHAPPY

PREGNANCY WANTED UNWANTED

ABORTION ATTEMPTS





# *PERINATAL LEVEL*

BPM 1: THE WATERY INTRAUTERINE WORLD:

*NO BOUNDARY*

BPM 11: CONTRACTIONS BEGIN, BUT THE CERVIX IS  
CLOSED. *NO WAY OUT*

BPM 111: THE CERVIX OPENS. ESCAPE IS POSSIBLE. *LIFE  
OR DEATH STRUGGLE*

BPM 1V: EMERGENCE FROM THE BIRTH CANAL INTO  
LIGHT. *RE-BIRTH*



BPM 1



WOMB TIME SPENT PRIOR TO  
ONSET OF LABOUR  
FETUS AND MOTHER ARE ONE  
NO BOUNDARY





## ***BPM II. CONTRACTIONS BUT CERVIX CLOSED***

CONSTRICITON

NO WAY OUT

COLD

LIMITATION

DEATH

STRUCTURE

CONTAINMENT





*BPM III*

CERVIX OPENS  
ESCAPE  
STRUGGLE

WARFARE  
VIOLENCE





***BPM 111***

**RAW SEXUALITY**

**PORNOGRAPHIC**

**LITTLE TO DO WITH LOVE**

**CAN BE DIFFICULT FOR PATIENT  
/THERAPIST TO ACCEPT**





# ***BPM 1V SUCCESSFUL EXPERIENTIAL RESOLUTION OF BIRTHING PROCESS***

**COMPLETION**

**OF BIRTH**

**PROCESS**





# *SUCCESSFUL EXPERIENTIAL RESOLUTION OF BIRTHING PROCESS*

COMPLETION OF BIRTH  
PROCESS

EMERGENCE INTO LIGHT

INTENSE SPIRITUAL  
OPENING AFTER  
DEATH/REBIRTH







# ***MYSTICAL EXPERIENCE***





# *TRANSPERSONAL DOMAIN*

Abstract geometric lines and shapes in the bottom right corner, including a large white outline of a right-pointing chevron and several smaller, overlapping white line segments.





***TRANSPERSONAL***



# *Psychedelics: MOA*

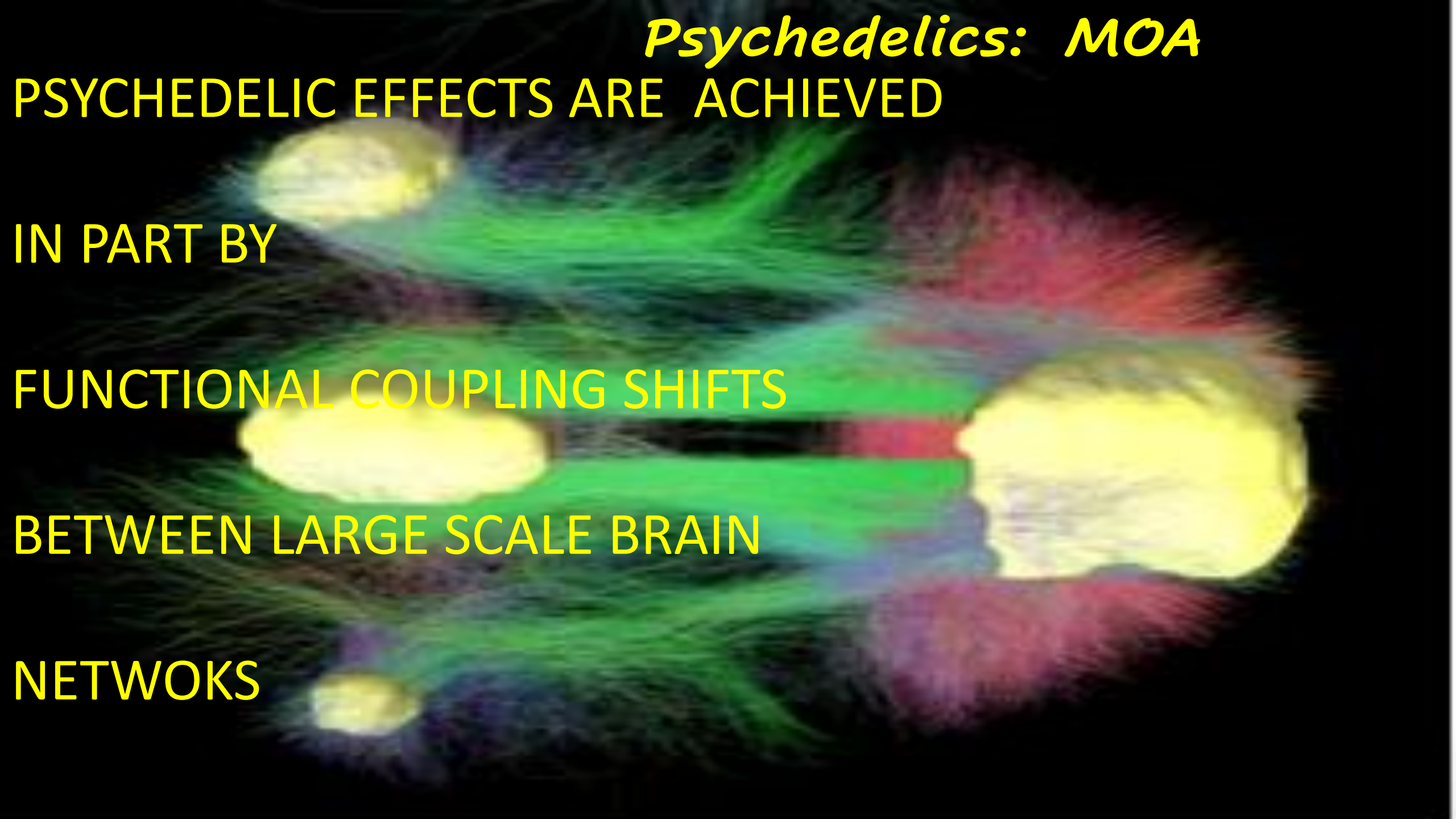
PSYCHEDELIC EFFECTS ARE ACHIEVED

IN PART BY

FUNCTIONAL COUPLING SHIFTS

BETWEEN LARGE SCALE BRAIN

NETWORKS

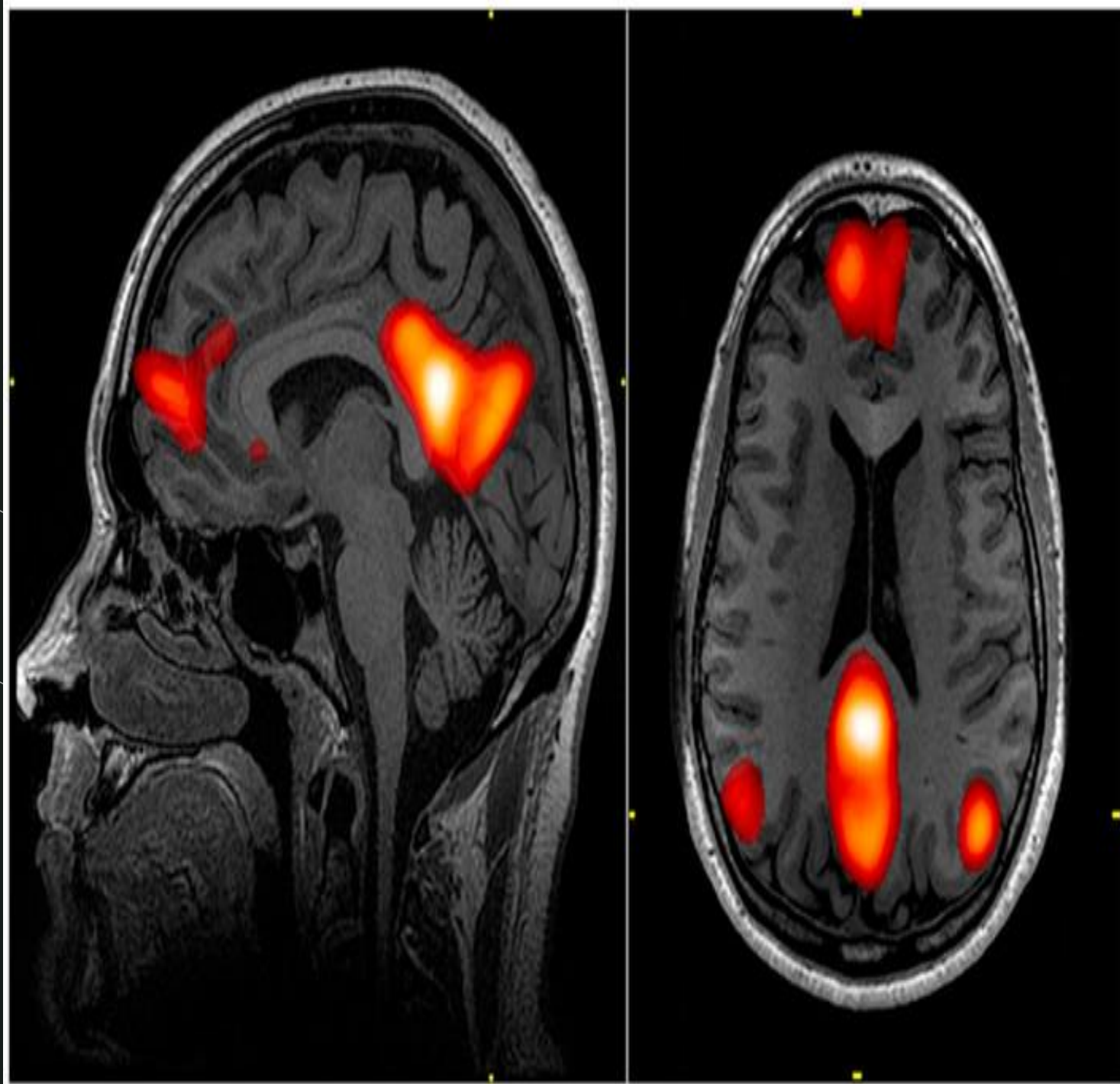


# *Psychedelics: MOA*

SPECIFICALLY THE  
DISINTEGRATION OF A

SET OF PATHWAYS

KNOWN AS THE  
DEFAULT MODE  
NETWORK  
(DMN)

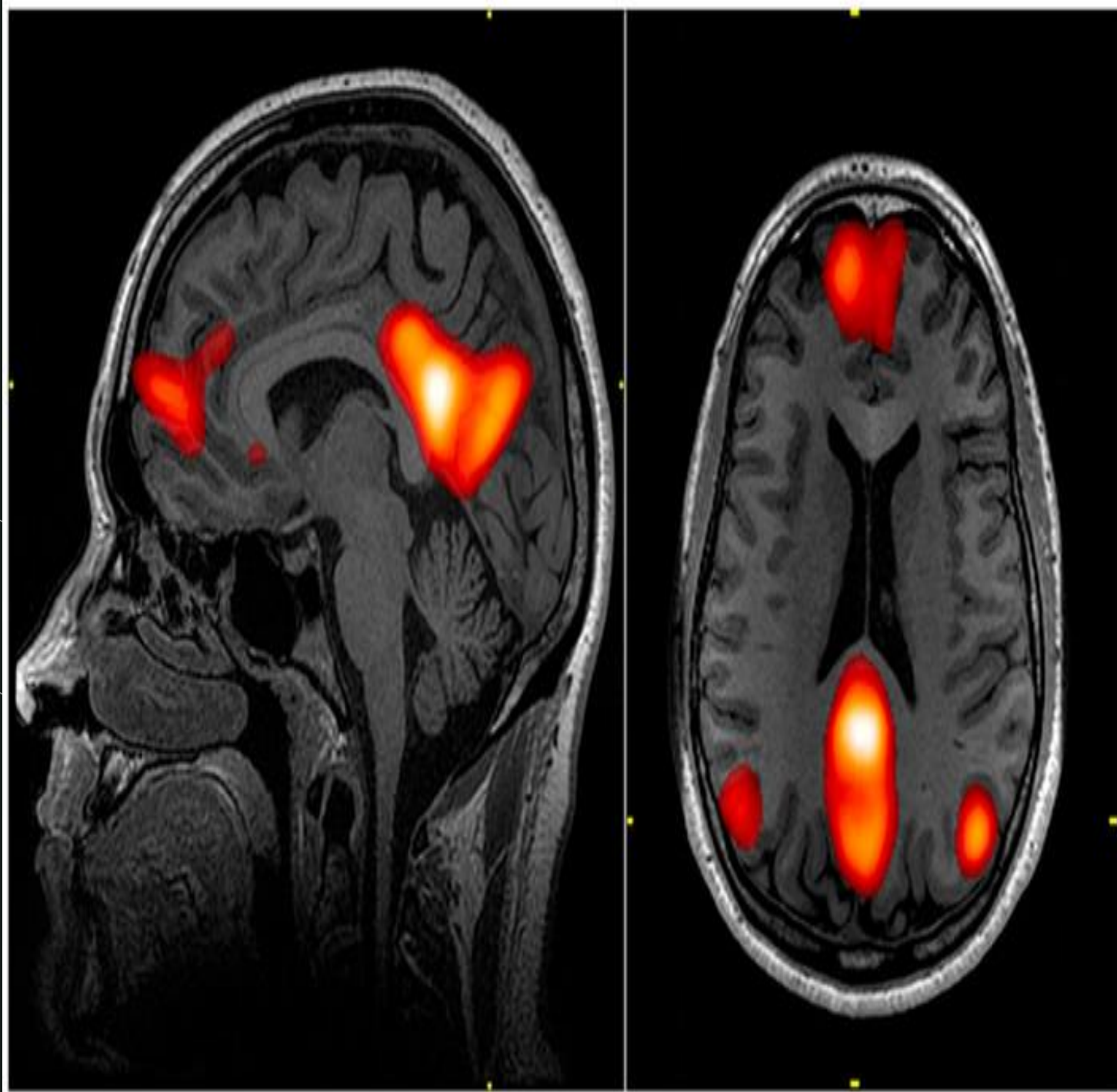




# *Psychedelics: MOA*


THE DEFAULT MODE  
NETWORK

(DMN)



# *Psychedelics: MOA*

ITS DISRUPTION RESULTS IN A FLOOD OF MININALLY  
FILTERED INTEROCEPTIVE AND  
EXTEROCEPTIVE INFORMATION  
AND A CONCOMITANT DISINTEGRATION OF  
ORDINARY SELF AWARENESS

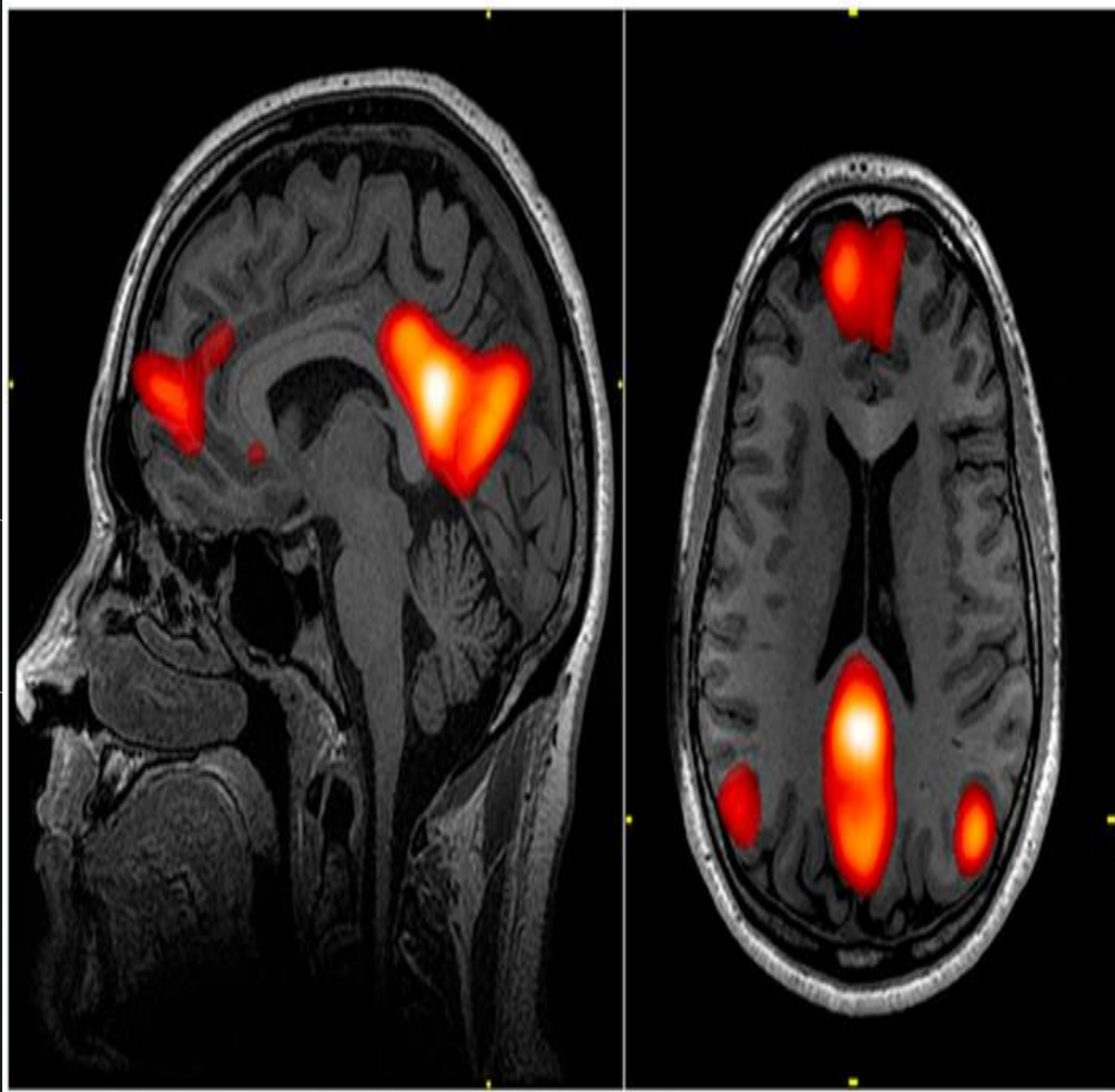
Abstract geometric shapes, including a large white outline of a right-pointing chevron and several smaller white outlines of chevrons and lines, are positioned in the lower right corner of the slide.



# *Psychedelics: MOA*

THE DEFAULT MODE  
NETWORK

(DMN)





## TRANSPERSONAL DOMAIN





# *TRANSPERSONAL DOMAIN*

LIKE THE GIRAFFE OR THE DUCK BILLED PLATYPUS THESE CREATURES INHABITING THE REMOTER REGIONS OF THE MIND ARE EXCEEDINGLY IMPROBABLE.

NEVERTHELESS THEY EXIST

AND AS SUCH CANNOT BE  
IGNORED BY ANYONE TRYING  
TO UNDERSTAND THE WORLD IN  
WHICH THEY LIVE



# *TRANSPERSONAL DOMAIN*

SELECTION.

SET

SETTING

DOSAGE

SKILLS






***TRANSPERSONAL  
EXPERIENCES***

***THREE PRINCIPAL  
CATEGORIES***

***BASED ON CONTENT***



- 
1. EXPERIENTIAL EXTENSION  
WITHIN CONSENSUS  
REALITY AND SPACE TIME
2. EXPERIENTIAL EXTENSION  
BEYOND CONSENSUS  
REALITY AND SPACETIME
3. EXPERIENCES OF A  
PSYCHOID NATURE



1. *WITHIN CONSENSUS*

*REALITY  
AND SPACE TIME*

1. TRANSCENDENCE OF  
SPATIAL BOUNDARIES

2 TRANSCENDENCE OF  
BOUNDARIES OF LINEAR  
TIME



# *1. TRANSCENDENCE OF SPATIAL BOUNDARIES*

EXPERIENCES OF DUAL UNITY

GROUP CONSCIOUSNESS

IDENTIFICATION WITH ANIMALS

IDENTIFICATION WITH PLANTS/

BOTANICAL PROCESSES





# *1. TRANSCENDENCE OF SPATIAL BOUNDARIES*

ONENESS WITH LIFE AND ALL CREATION

PLANETARY CONSCIOUSNESS

EXTRATERRESTRIAL EXPERIENCES

IDENTIFICATION WITH THE UNIVERSE



***TRANSCENDENCE BOUNDARIES LINEAR TIME***



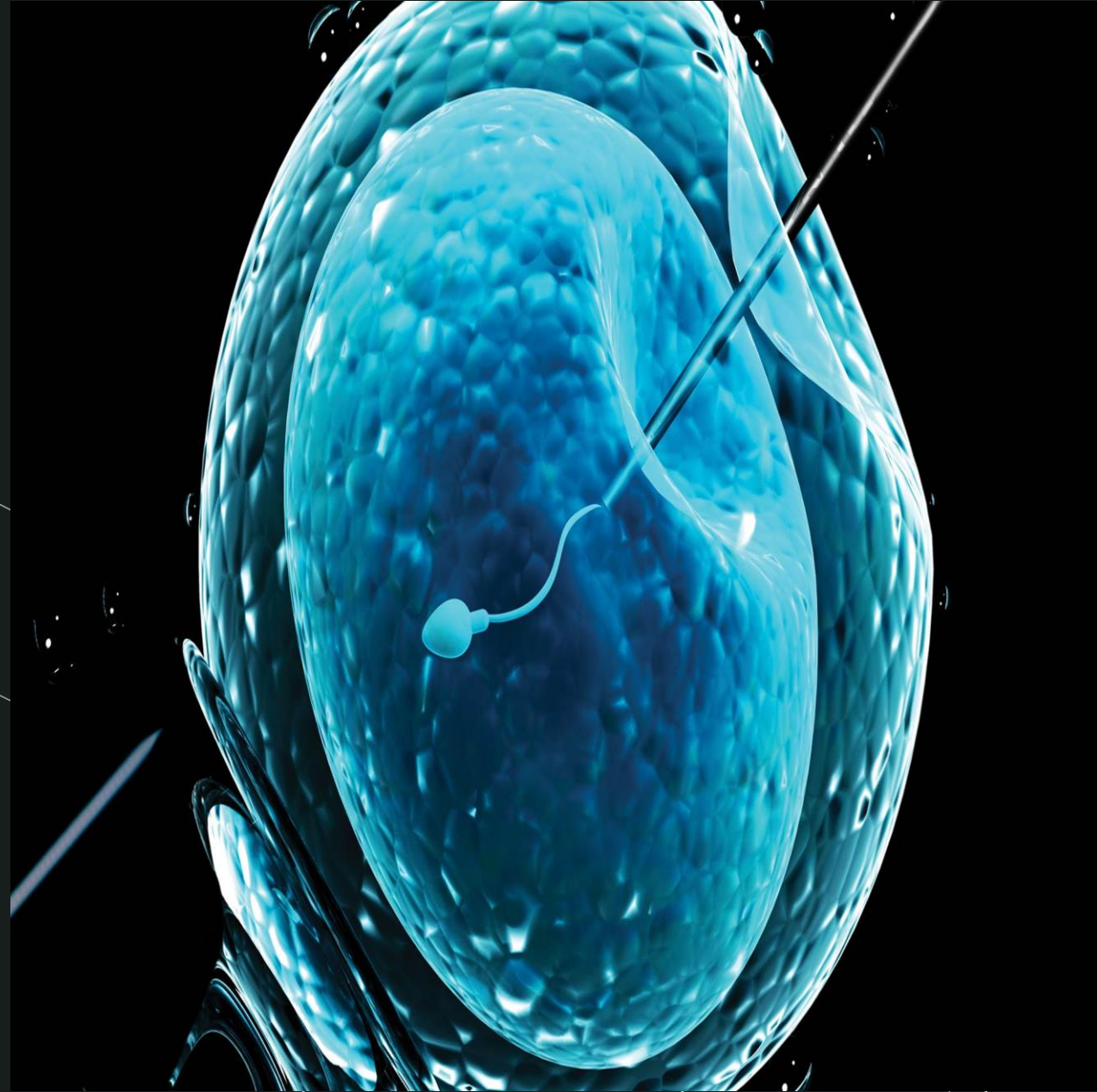


*TRANSCENDENCE BOUNDARIES LINEAR TIME*

EMBRYONAL EXPERIENCES

ANCESTRAL EXPERIENCES

RACIAL AND COLLECTIVE  
EXPERIENCES



# *TRANSCENDENCE BOUNDARIES LINEAR TIME*

PAST INCARNATION  
EXPERIENCES

PHYLOGENETIC EXPERIENCES

EXPERIENCES OF PLANETARY  
EVOLUTION

COSMOGENIC EXPERIENCES





*EXPERIENTIAL EXTENSION BEYOND CONSENSUS REALITY  
AND SPACE TIME*

EXPERIENCES OF

ANIMAL SPIRITS





# *EXPERIENTIAL EXTENSION BEYOND CONSENSUS REALITY AND SPACE TIME*

ENCOUNTERS WITH  
SPIRIT GUIDES





# *EXPERIENTIAL EXTENSION BEYOND CONSENSUS REALITY AND SPACE TIME*

MYTHOLOGICAL SEQUENCES  
BLISSFUL AND WRATHFUL DEITIES





# EXPERIENTIAL EXTENSION BEYOND CONSENSUS REALITY AND SPACE TIME



EXPERIENCES OF  
UNIVERSAL ARCHETYPES.

ERIC ESTAMPADOR CABALES

MARS/VENUS/



A cosmic scene featuring a bright blue sphere, possibly a planet or moon, surrounded by numerous dark, irregularly shaped rocks or asteroids floating in a dark, swirling space. The background is a mix of dark blue and purple hues with some lighter, wispy clouds or nebulae. The overall atmosphere is mysterious and expansive.

# *EXPERIENTIAL EXTENSION BEYOND CONSENSUS REALITY AND SPACE TIME*

EXPERIENCE OF THE DEMIURGE

EXPERIENCE OF COSMIC CREATION

THE SUPRACOSMIC AND METACOSMIC VOID



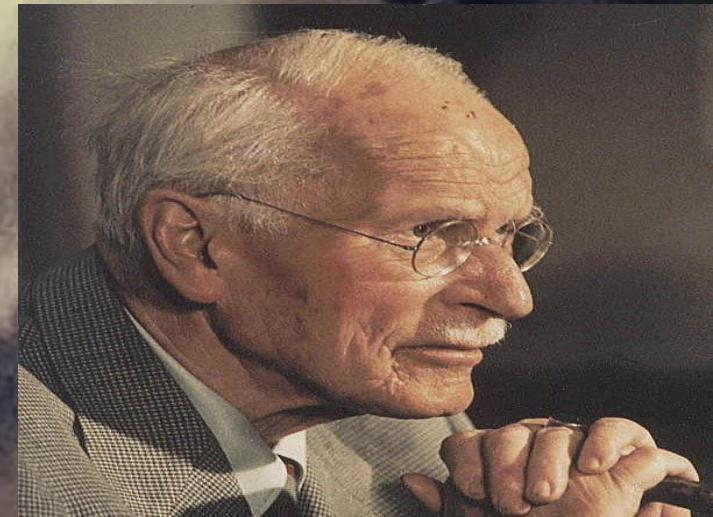
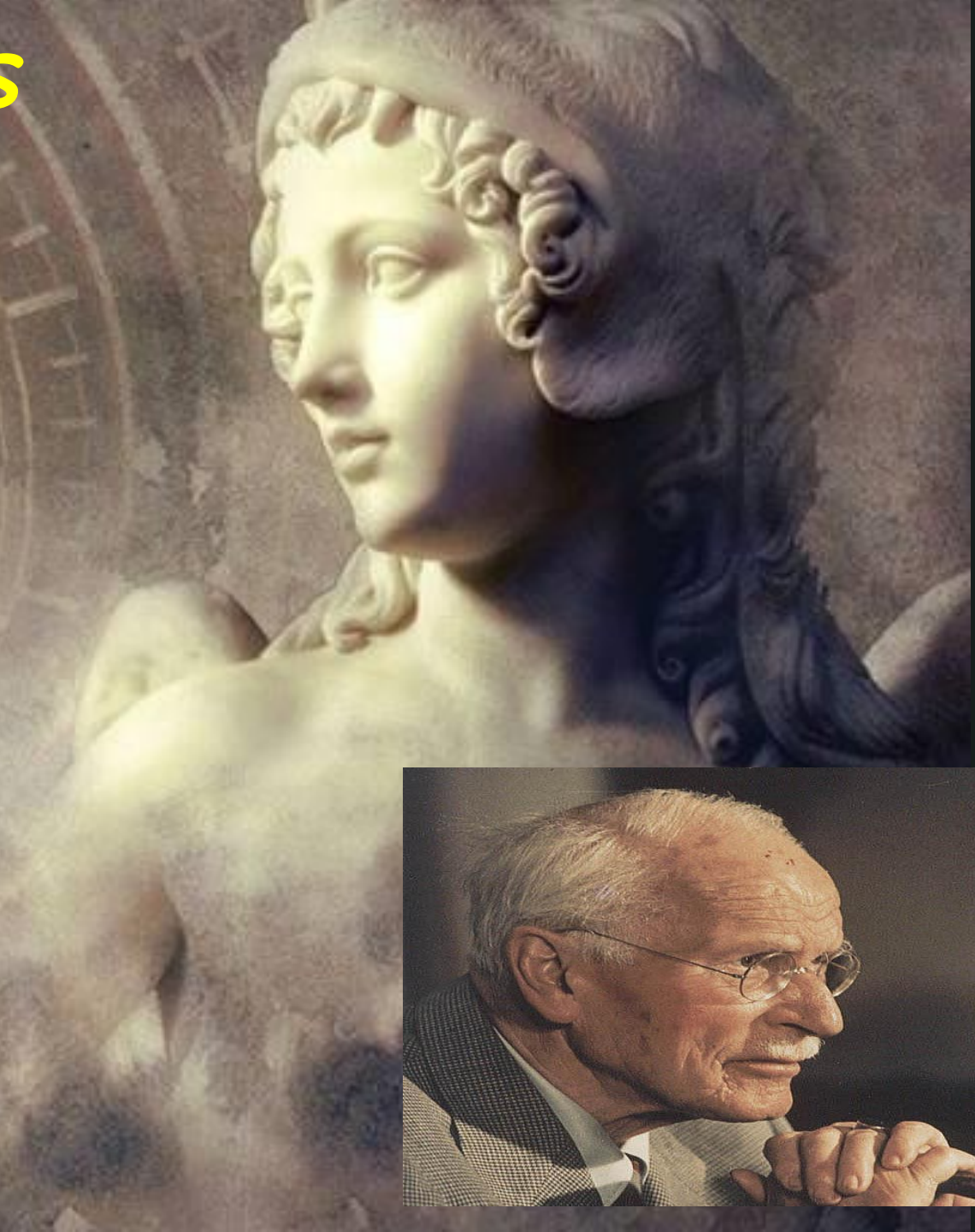
*PSYCHOID EXPERIENCES*

SYNCHRONISTIC LINKS

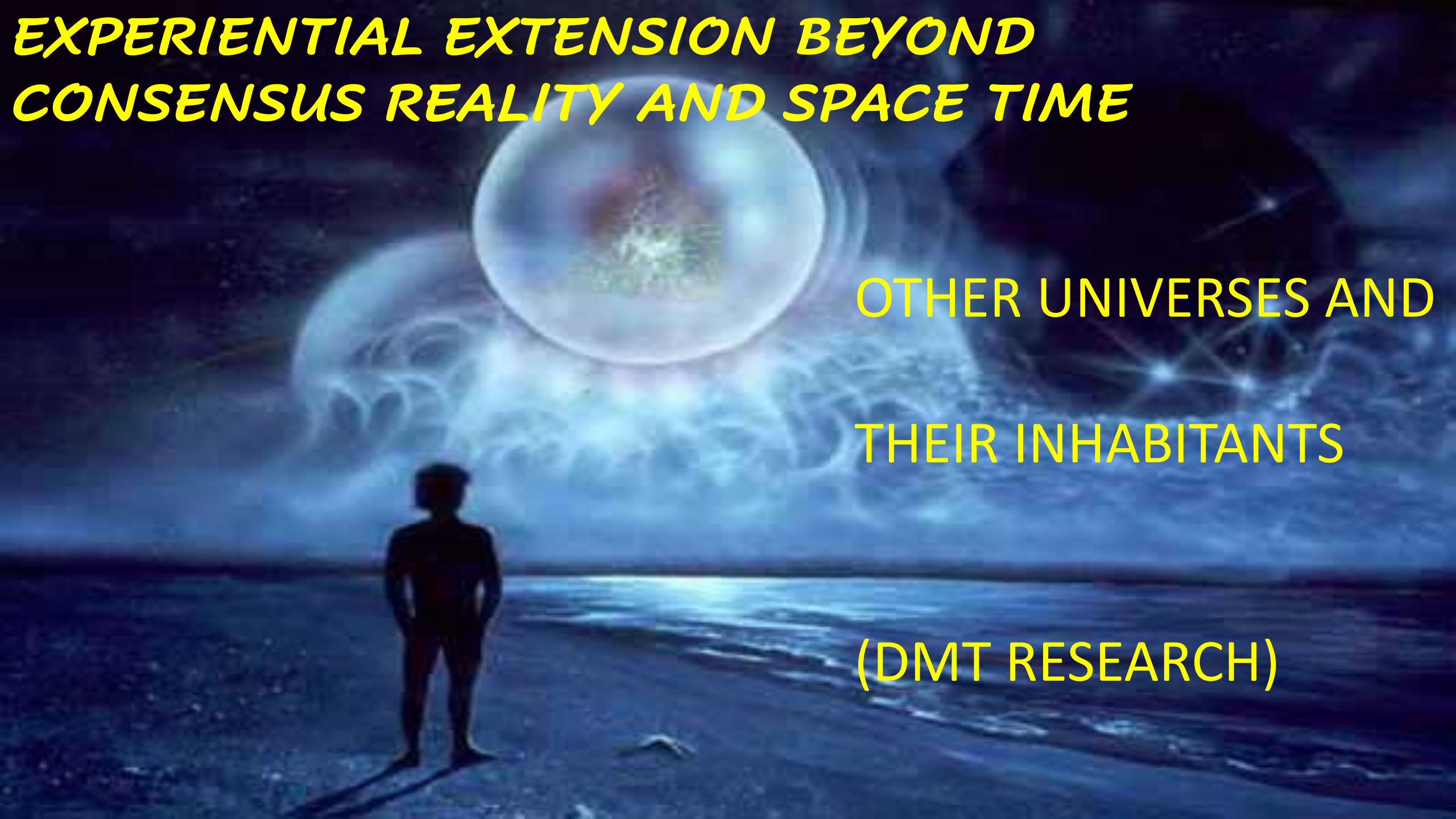
BETWEEN

CONSCIOUSNESS

AND MATTER







# ***EXPERIENTIAL EXTENSION BEYOND CONSENSUS REALITY AND SPACE TIME***

**OTHER UNIVERSES AND  
THEIR INHABITANTS**

**(DMT RESEARCH)**





***MYSTICAL EXPERIENCE***

***SENSE OF UNITY***

***INEFFABILITY***

***JOY***

***NOETIC  
QUALITY***

***TRANSIENT***

***SUSPENSION OF TIME***

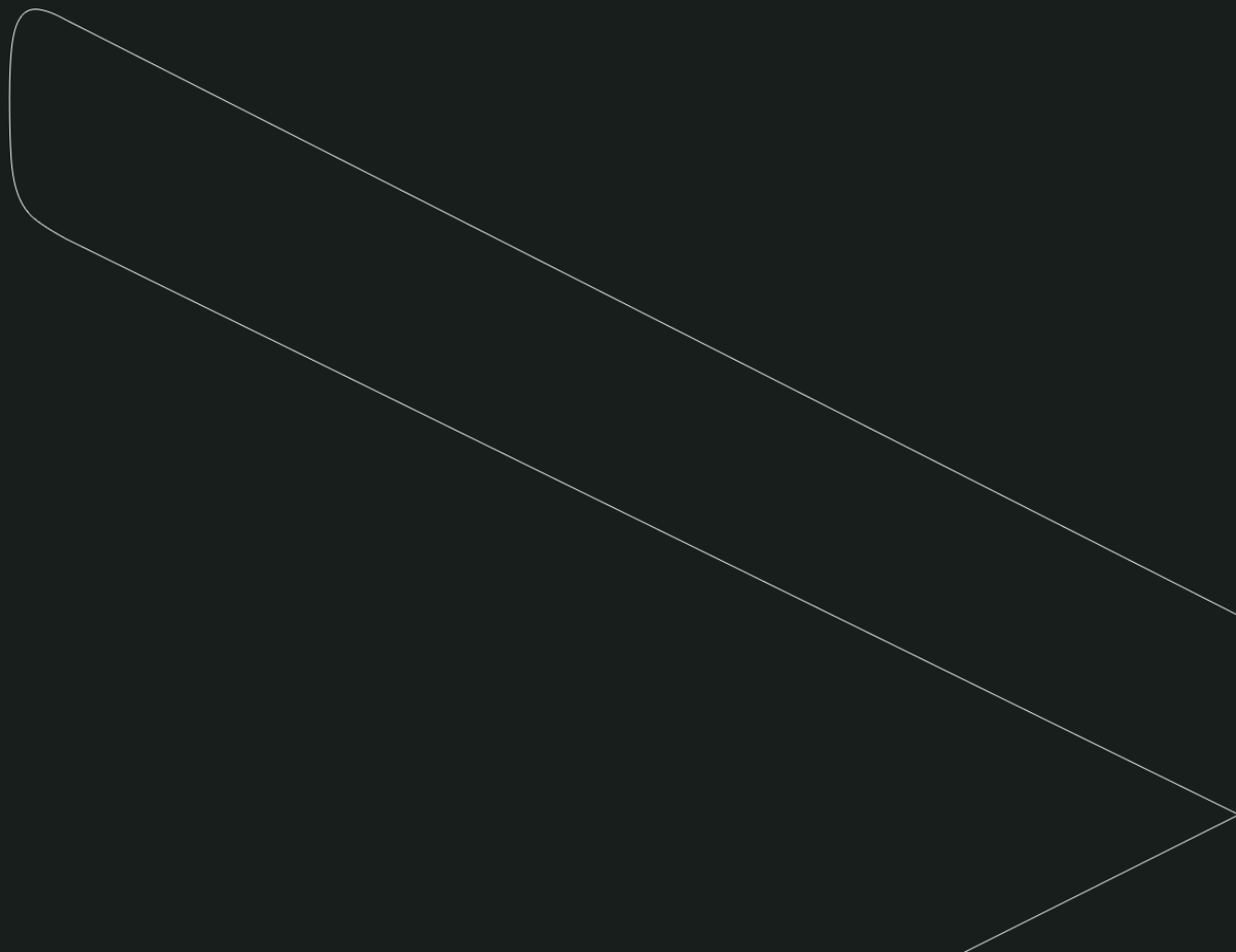
***PARADOXICALITY***





***MYSTICAL EXPERIENCE***

***FULLY          EMBRACE          THE          EXPERIENCE***





# ***MOST UNUSUAL EXPERIENCE***

## **UNUSUAL SPIRITUAL EXPERIENCES**

**POWERFUL DÉJÀ VU**

**PREDICTIVE DREAMS**

**PAST LIFE EXPERIENCES**

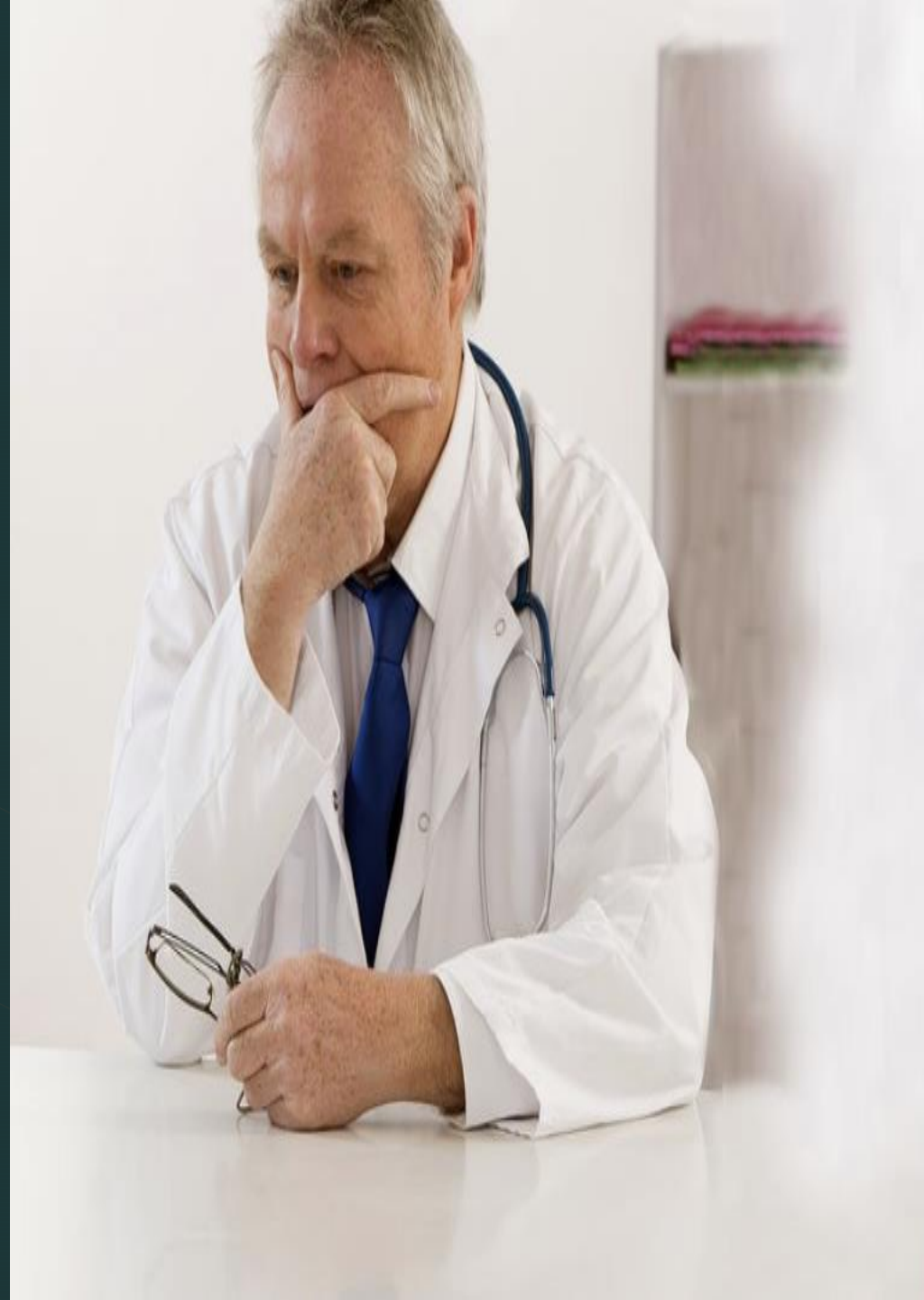
**ABDUCTION PHENOMENON**  
**ANYTHING**



***MOST UNUSUAL  
EXPERIENCE***  
SUCH EXPERIENCES ARE  
COMMON

BUT ARE ROUTINELY TRIVIALIZED

OR PATHOLOGIZED







## *TRANSPERSONAL LEVELS*

JUNG'S COLLECTIVE UNCONSCIOUS  
ARCHETYPAL EXPERIENCES  
KARMIC MEMORIES  
PAST LIVES  
MYSTICAL EXPERIENCE  
MYTHOLOGICAL EXPERIENCES  
UNIVERSAL MIND  
SUPRACOSMIC AND METACOSMIC  
VOID







***SPECIFIC PREPARATION ADVICE***



# *PREPARATION*

TRUST THE FACILITATORS

TRUST THE PROCESS

TRUST THE MEDICINES

TRUST THE INNER

HEALER





# ***PREPARATION***



**ASSURE PATIENT THEY  
WILL NEVER BE ALONE  
DURING THE SESSION**





# ***PREPARATION***



EXPERIENTIAL RATHER THAN  
DISCOURSE THERAPY

STAY INTERNAL

LEARN AND USE BREATHING  
TECHNIQUE TO TRAVERSE  
CHALLENGING PASSAGES



# *PREPARATION*



DISCUSS 'GOING WITH  
THE FLOW'

ALLOW BODY OVER MIND

FEELINGS OVER THOUGHT





# *PREPARATION*



BE CURIOUS.

A DOOR OPENS,

GO THROUGH IT.

STAIRS APPEAR,

CLIMB THEM (BILL RICHARDS)



# ***PREPARATION***



DISCUSS CONSENSUAL  
PHYSICAL

CONTACT/BODY WORK

NEVER ANY SEXUAL TOUCH

THIS IS MADE EXPLICIT





*TOUCH/BODYWORK*



THE **STOP** WORD



# AGREEMENTS

STAY IN THE SPACE  
FOR THE ENTIRE  
SESSION

NO DAMAGE TO  
SELF/FACILITATORS/SPACE

LEARN/PRACTICE  
RELAXATION BREATHING  
TECHNIQUES





# AGREEMENTS

AVOID INTOXICANTS

INCLUDING CANNABIS  
AND ALCOHOL

REPORT NEW HEALTH CHANGES  
PROMPTLY TO TREATING TEAM



# ***PREPARATION***



LOOSE COMFORTABLE CLOTHING

NOTE PAD

EYE SHADES

PHOTOGRAPHS OF SELF AS CHILD

MEANINGFUL OBJECTS

DESCRIBE AND IF FEASIBLE SHOW SPACE



# *PREPARATION*



SUPPORT AVAILABLE POST SESSION

NO DRIVING SESSION DAY

IMPORTANCE OF INTEGRATION

SPECIFIC INTEGRATION PLANS

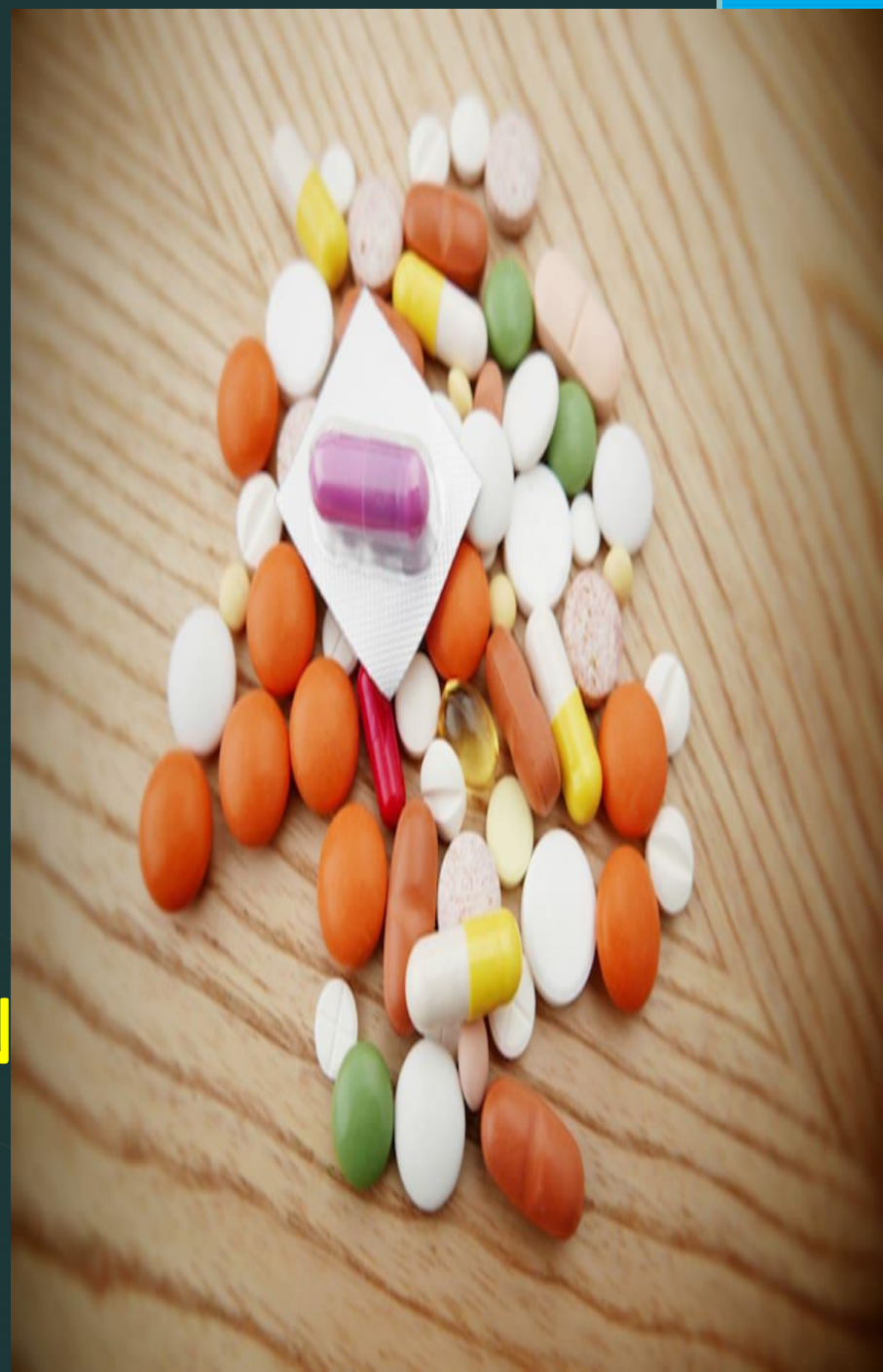
# ***MEDICATIONS***

CONTINUE STANDARD MEDICATIONS

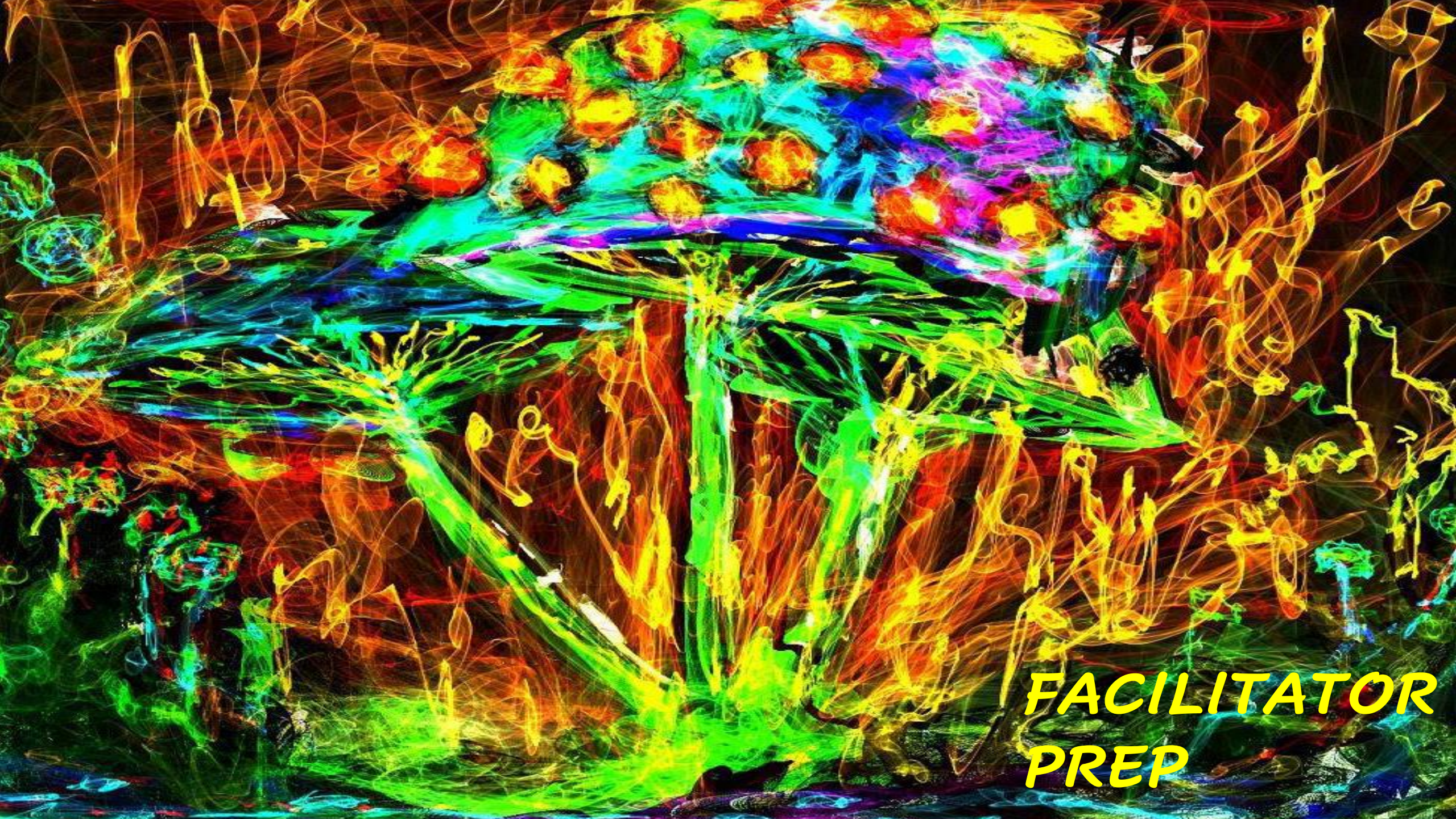
PARTICULARLY PAIN MEDS/LAXATIVES

DISCONTINUE ANXIOLYTICS /  
ANTI DEPRESSANTS WHERE POSSIBLE

OBSERVE REGULAR DISCONTINUATION  
PROTOCOLS







***FACILITATOR  
PREP***

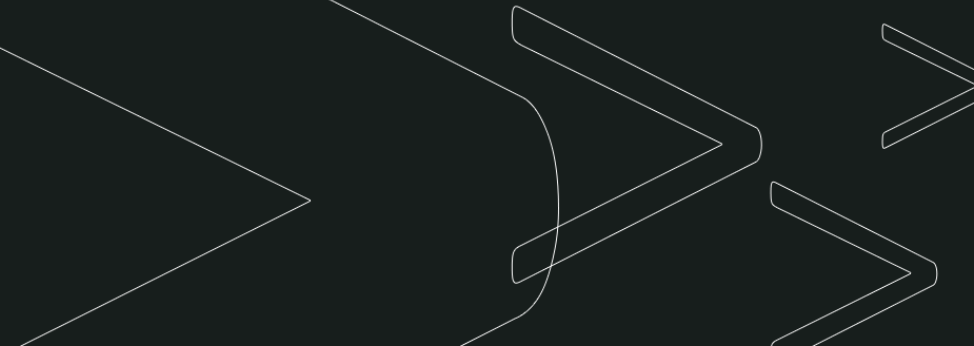


# ***FACILITATOR PREP***

PATIENTS MAY GRAPHICALLY RE-EXPERIENCE  
HORRIBLE THINGS

UNPREPARED THERAPISTS MAY BE DE-STABILIZED

AWARE/EXPERIENCED THERAPISTS CAN BE  
POWERFUL GUIDES AND SUPPORTS

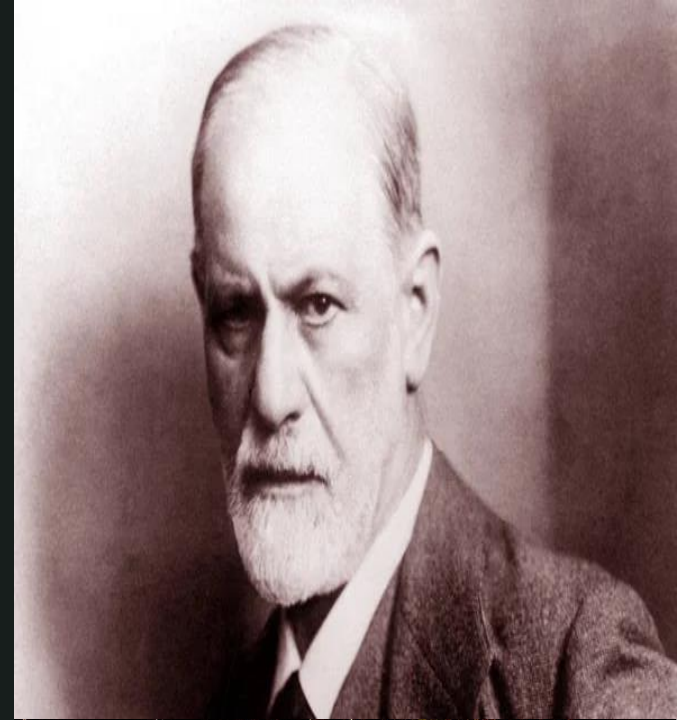


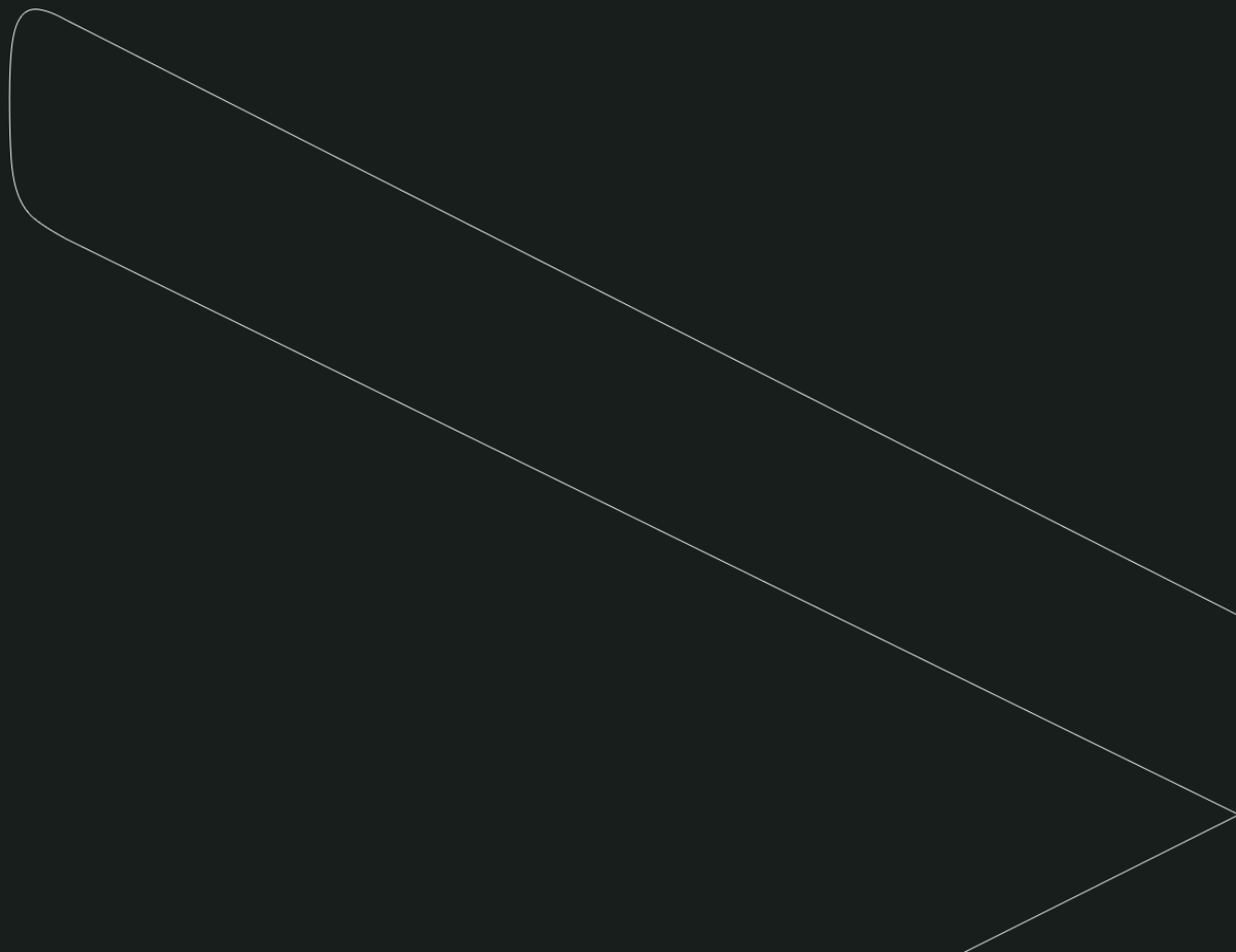


# ***FACILITATOR PREP***

QUIETLY HOLDING SPACE MORE  
USEFUL  
THAN THERAPEUTIC BRILLIANCE

THERAPISTS FAMILIAR WITH  
PSYCHEDELIC EXPERIENCE WILL  
BETTER MANAGE  
THE PATIENT'S PROCESS







# CONDUCTING THE SESSION





# CONDUCTING THE SESSION

TWO FACILITATORS

MUSIC

EYESHADES

BATHROOM

BUCKET





# CONDUCTING THE SESSION

FACILITATORS STAY OUT  
OF THE SESSION  
AS MUCH AS POSSIBLE







*CHALLENGING ISSUES*



# ***LOSS OF TRUST***

WORK ON YOUR BREATH

SPEAK SOFTLY

STAY GENTLE

SAY:

CHALLENGES ARE OPPORTUNITY  
FOR HEALING

THE WAY OUT IS THROUGH

ACCEPT AND ALLOW

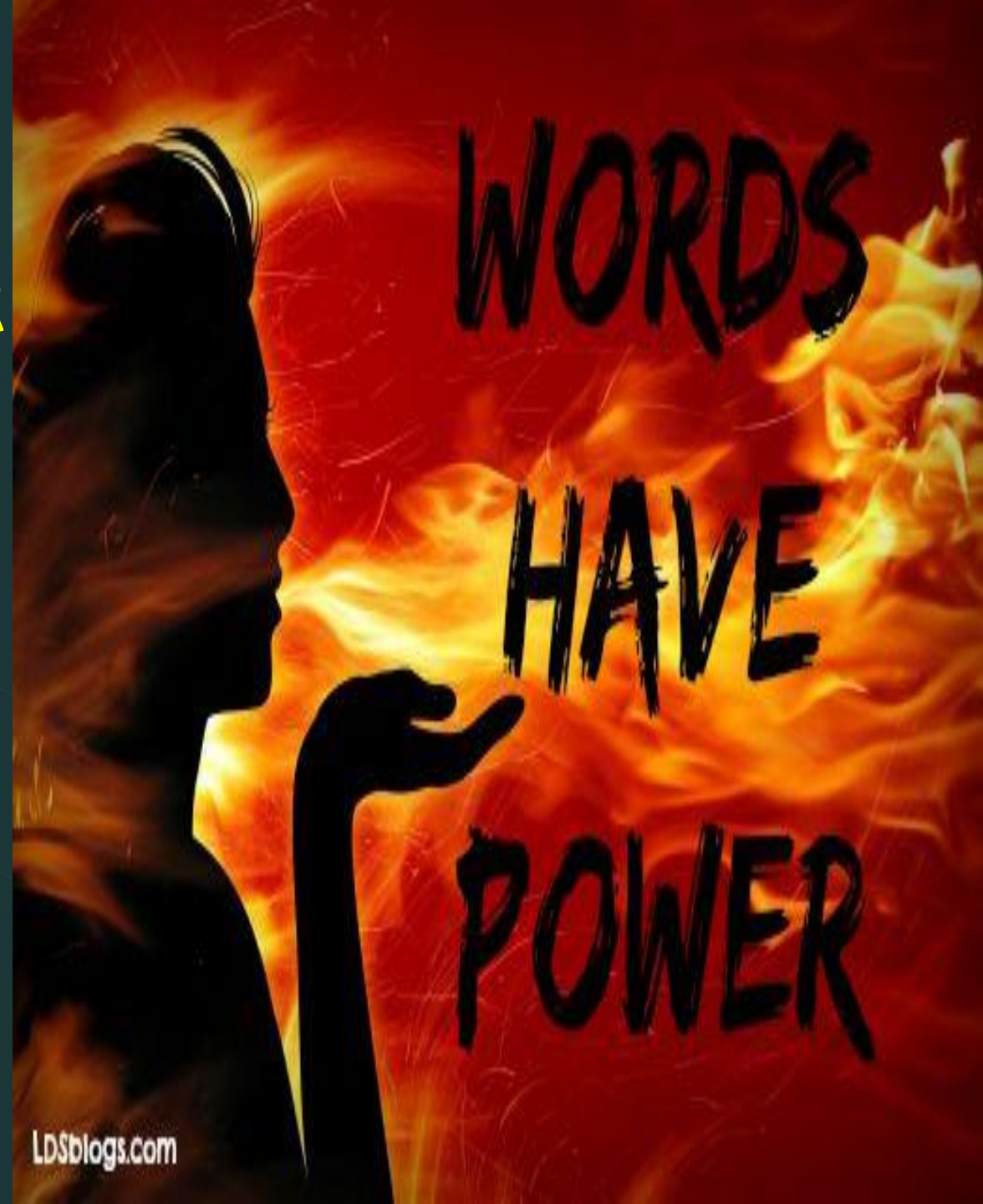


# ***LOSS OF TRUST***

**WE CAN TALK ABOUT IT LATER**

**FOR NOW SURRENDER  
TO THE EXPERIENCE**

**SIMPLY BE**







WANTING TO LEAVE SPACE

ENCOUNTERING DEATH

# ***WANTING TO LEAVE***

PATIENT HASVE BROUGHT  
PHOTOS OR MEANINGFUL  
OBJECTS

THESE CAN BE USED AS  
TOUCH STONES IN DIFFICULT  
SITUATIONS







*CONFRONTING DEATH*

DON'T FIGHT IT.

LET IT HAPPEN

IT'S NOT REALLY DYING

THE MOMENT YOU ACCCEPT  
DEATH YOU WILL  
EXPERIENCE RE-BIRTH



# *CONFRONTING DEATH*

IT IS NOT ANNIHILATION OR DISINTEGRATING

IT IS DISSOLVING

DISSOLVING INTO THE UNIVERSE





*CONFRONTING DEATH*

USE THE MUSIC

BE IN IT

LET IT CARRY YOU

TRY TO BECOME THE MUSIC

# *LIFE AND ITS MEANING*

INTENSE CONFRONTATION WITH  
MEANINGLESSNESS

INTENSIFIED BY PSYCHEDELIC

NO ATTEMPT TO MAKE BETTER

OPPORTUNITY TO FACE AND WALK  
THROUGH





# *ENDING THE SESSION*

PSYCHEDELICS COME ON IN WAVES

MAY TERMINATE IN SAME WAY

DON'T BE IN A HURRY

ALLOW PATIENT DIRECT THE PROCESS





# *INTEGRATION*



AS IMPORTANT AS THE SESSION ITSELF



# *INTEGRATION*



REMEMBERING

ART

JOURNALING

SPIRITUAL  
PRACTICE

MEDITATION

CONNECTIONS

TIME OUT NATURE



# *INTEGRATION*

A person in a dark suit is shown from the chest down, holding a glowing blue gear in their right hand. Several other glowing blue gears of various sizes are visible in the background, some overlapping each other. The scene is set against a dark, textured background.

REMEMBERING

GOING FORWARD

WHAT WILL YOU DO  
DIFFERENTLY?

SPIRITUAL  
PRACTICE?

CONNECTIONS  
FRIENDS AND  
FAMILY



# ***INTEGRATION***

A person in a dark suit is shown from the chest down, holding a glowing blue gear in their right hand. Several other glowing blue gears of various sizes are floating in the background, creating a sense of mechanical complexity and integration. The background is dark, making the glowing gears stand out.

**NO IMMEDIATE  
MAJOR LIFE CHANGES**

**INVESTIGATE SPECIFIC  
LESSONS/INSTRUCTIONS**



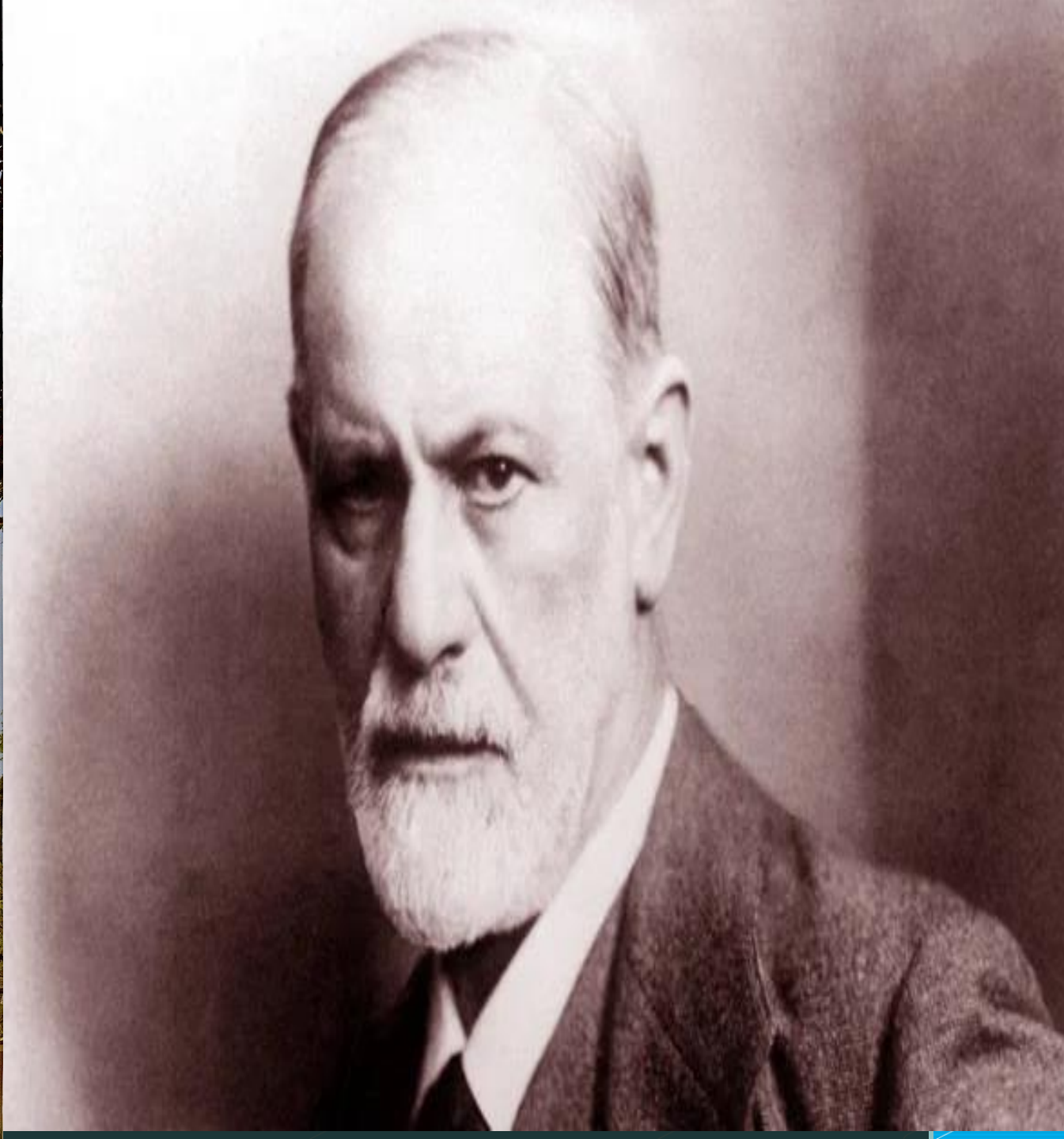
# ***INTEGRATION***



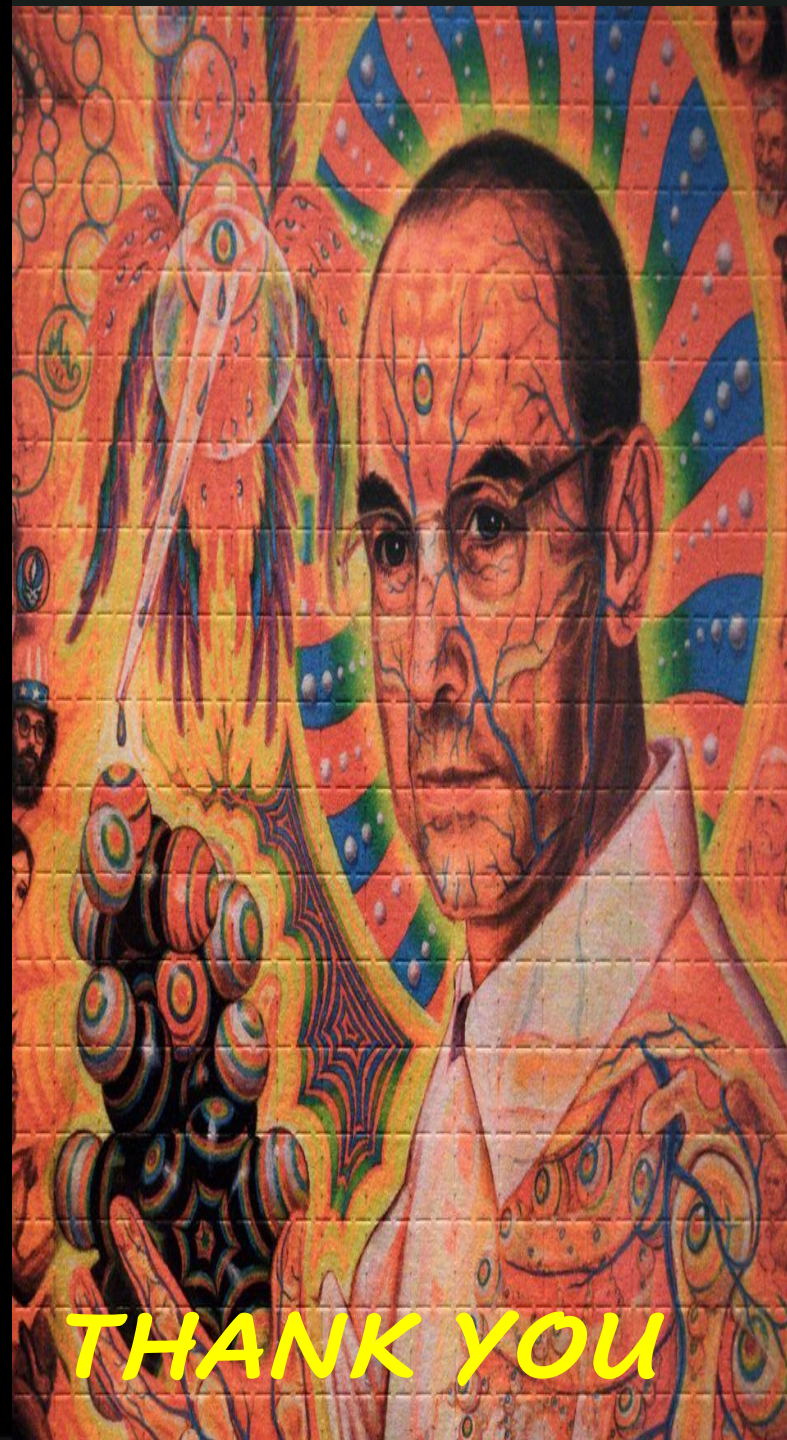
# **THERAPY**



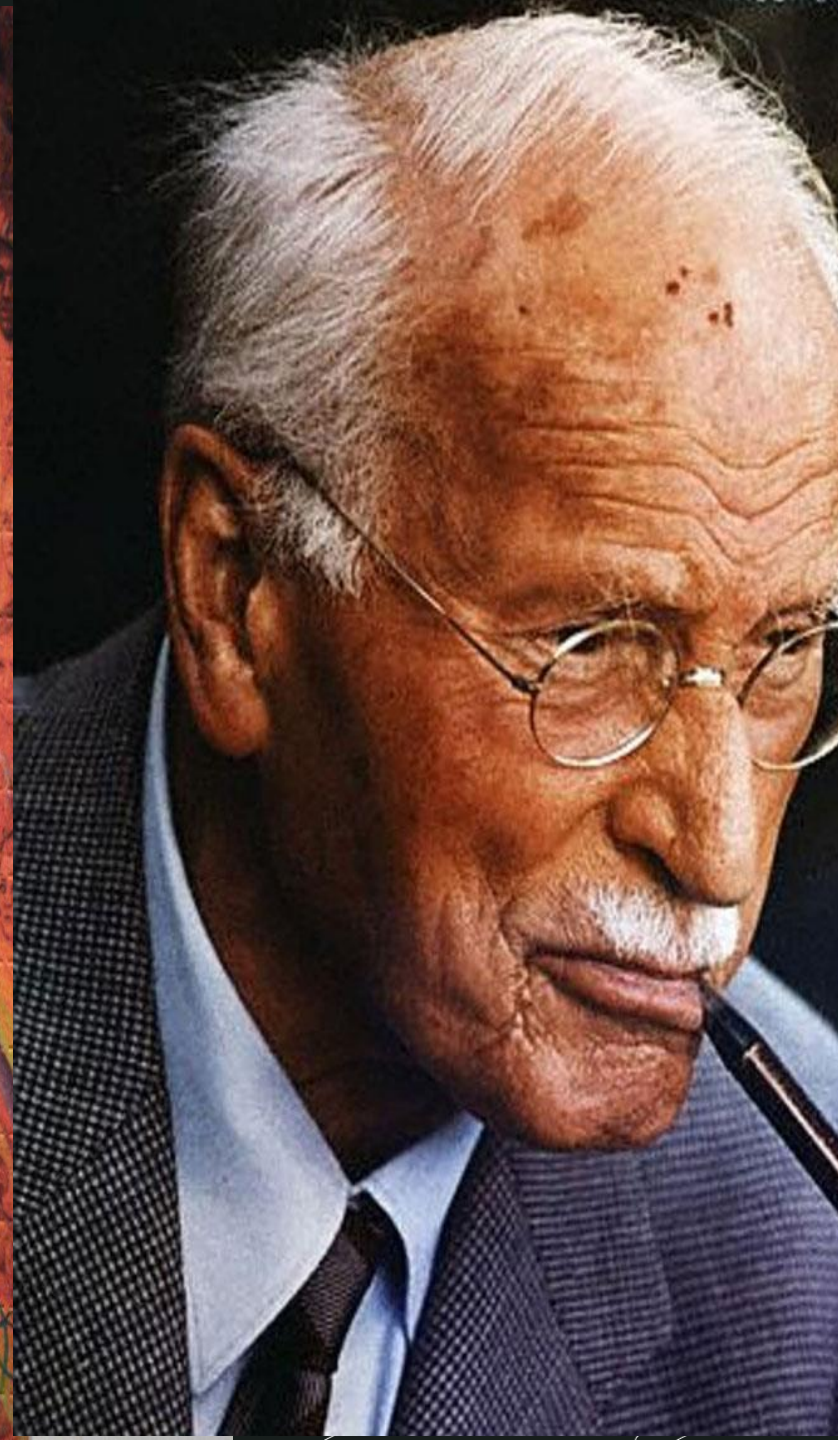
**FINIS**







THANK YOU







***QUESTIONS?***